

Vision Express Engraver S5 Installation Guide

© 2018 Vision Engraving & Routing Systems



Vision Express Engraver S5 Installation Guide

© 2018 Vision Engraving & Routing Systems

All rights reserved. No parts of this work may be reproduced in any form or by any means - graphic, electronic, or mechanical, including photocopying, recording, taping, or information storage and retrieval systems - without the written permission of the publisher.

Products that are referred to in this document may be either trademarks and/or registered trademarks of the respective owners. The publisher and the author make no claim to these trademarks.

While every precaution has been taken in the preparation of this document, the publisher and the author assume no responsibility for errors or omissions, or for damages resulting from the use of information contained in this document or from the use of programs and source code that may accompany it. In no event shall the publisher and the author be liable for any loss of profit or any other commercial damage caused or alleged to have been caused directly or indirectly by this document.

Revised: 11/5/2018

Table of Contents

Part I Introduction	4
1 Computer Requirements.....	5
2 General Electrical and Facility Requirements.....	6
3 Vision Express Engraver Installation Layout.....	6
Part II Vision Software Installation	7
Part III Machine Setup	18
1 Direct Connection to Computer.....	20
2 Network Connection.....	26

1 Introduction

This guide contains information to prepare the new owner of a Vision Express for the proper installation of their machine. It is the customer's responsibility to read through this guide and make sure the work area, electrical and computer requirements are met. If for any reason, there are questions about these requirements, please call your Vision representative as soon as possible.

In the following sections, the complete machine and Vision software installation will be outlined.

Please call your distributor or the service department at Vision for assistance if you have any questions with this procedure.

FOR MORE DETAILED INFORMATION, PLEASE REFER TO THE USER GUIDE FOR YOUR MACHINE INSTALLED WITH THE VISION SOFTWARE. USER GUIDES ARE ALSO AVAILABLE ONLINE AT <http://www.visionengravers.com/support/vision-engraver-manuals.html>

Important Note:

The Vision software is available in two versions; one with a dongle, and one that is "dongle-less" and is loaded on to a USB Memory stick. If your machine was delivered with, or you currently have the white/blue or orange software dongle, DO NOT LOSE IT!

The Vision software will NOT run without the dongle plugged into the computer.

USB Stick



Dongles



1.1 Computer Requirements

Minimum System Requirements:

CPU:	Dual Core (2.0GHz or higher)
Hard Drive:	750 GB free space
RAM:	1GB + OS Requirements
Operating System:	Windows 10 (32/64 bit) Windows 8 (32/64 bit) Windows 7 SP.1 (32/64 bit) ***Requires Service Pack 1
Ports:	USB port for security dongle Local or network Ethernet port to connect machine

Suggested System Requirements

CPU:	Core i3 (or faster)
Hard Drive:	1 TB (or more)
RAM::	4GB + OS Requirements
Operating System:	Windows 10 (32/64 bit) Windows 8 (32/64 bit) Windows 7 SP.1 (32/64 bit) ***Requires Service Pack 1
Ports	USB port for security dongle Local or network Ethernet port to connect machine

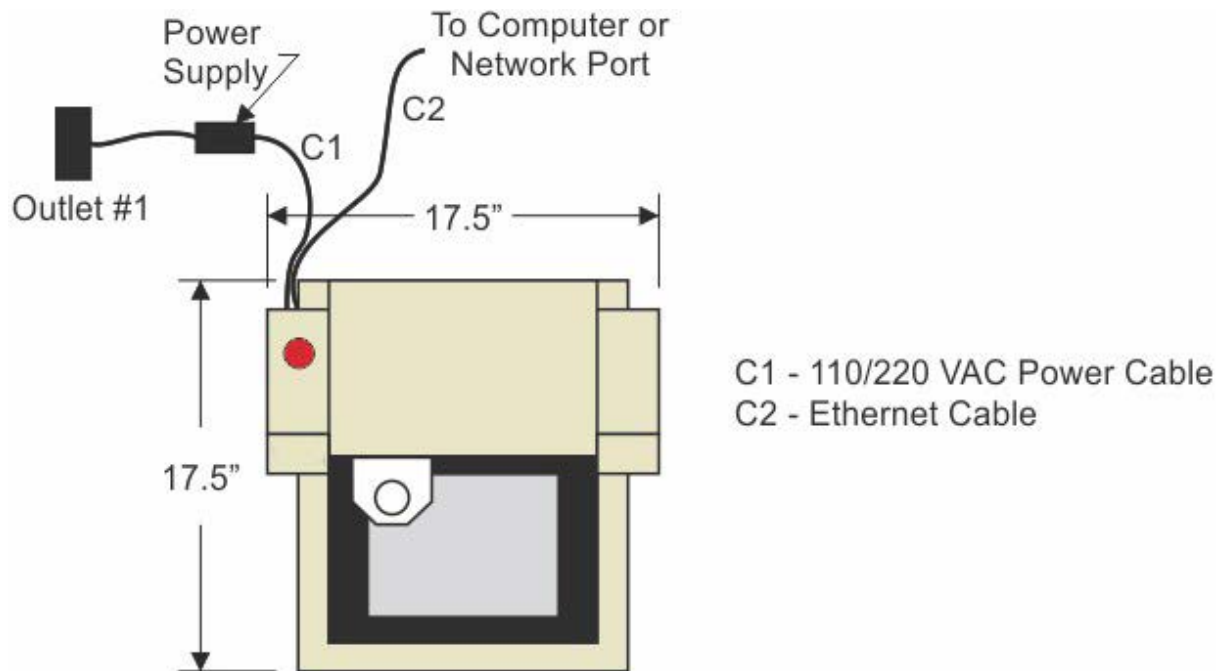
1.2 General Electrical and Facility Requirements

Machine Model	Requirements
Express	One 110 VAC 15 Amp or One 220 VAC 10 Amp Single Phase
Optional Equipment Engraving Vacuum Chip Removal System	One 110 VAC 15 Amp

NOTE: In addition to the above requirements, a standard outlet is required for the computer.

1.3 Vision Express Engraver Installation Layout

Vision Express Engraver Installation Layout



Vision Express Engraver Installation Layout

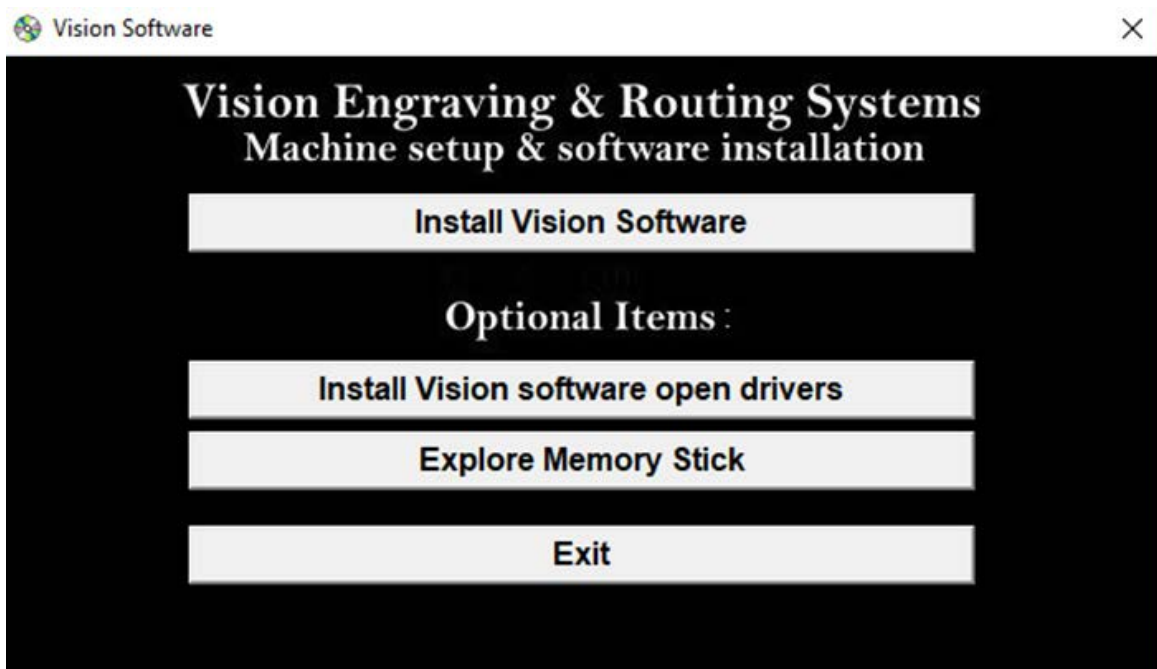
2 Vision Software Installation

Insert the Vision USB dongle into the USB port on the computer. Navigate to the Devices and Drives area on your PC. Double click on the Vision icon to open the files on the USB dongle.

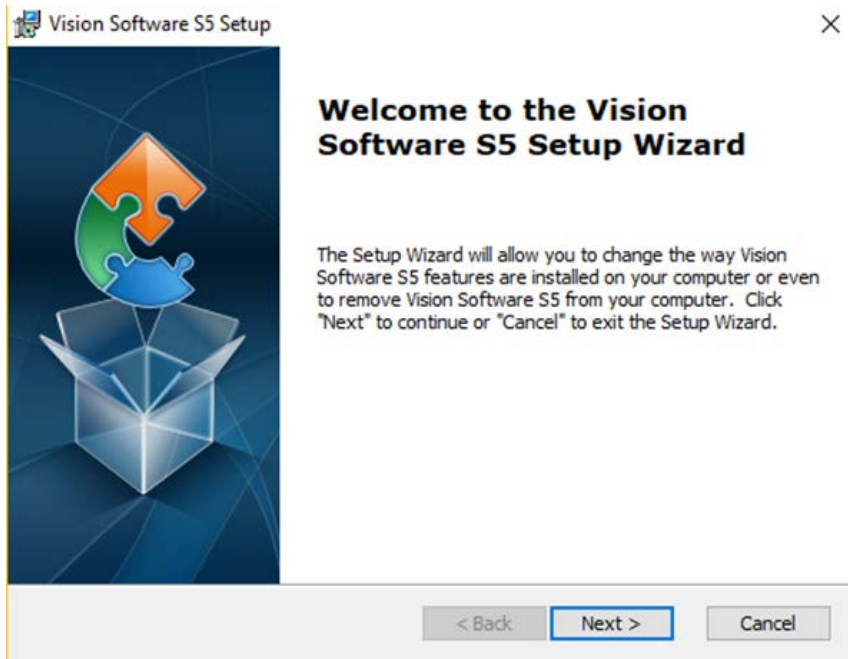
Select the Start or Start.exe file to begin.

<input type="checkbox"/>	Name	Date modified	Type	Size
	cdmdata	7/31/2018 3:54 PM	File folder	
	ClipArt	7/30/2018 4:29 PM	File folder	
	Vision Pro dongle driver	7/30/2018 4:16 PM	File folder	
	Vision Screen Backgrounds	7/30/2018 4:16 PM	File folder	
	VPro	7/31/2018 12:57 PM	File folder	
	AUTORUN.INF	7/31/2018 4:42 PM	Setup Information	1 KB
	ProductS.ini	8/1/2018 1:57 PM	Configuration sett...	1 KB
	ProductS.lcf	8/1/2018 1:57 PM	LCF File	3 KB
	slcdmenu.cdi	7/31/2018 4:42 PM	CDI File	10 KB
	SLCDMENU.EXE.manifest	8/24/2015 1:02 PM	MANIFEST File	1 KB
<input checked="" type="checkbox"/>	Start.exe	1/17/2017 6:10 PM	Application	391 KB
	Version 2.02 S5.txt	6/19/2012 9:52 AM	Text Document	0 KB
	Vision Software.msi	8/1/2018 1:47 PM	Windows Installer ...	579,809 KB
	VISION.ICO	1/5/2012 11:11 AM	Icon	289 KB

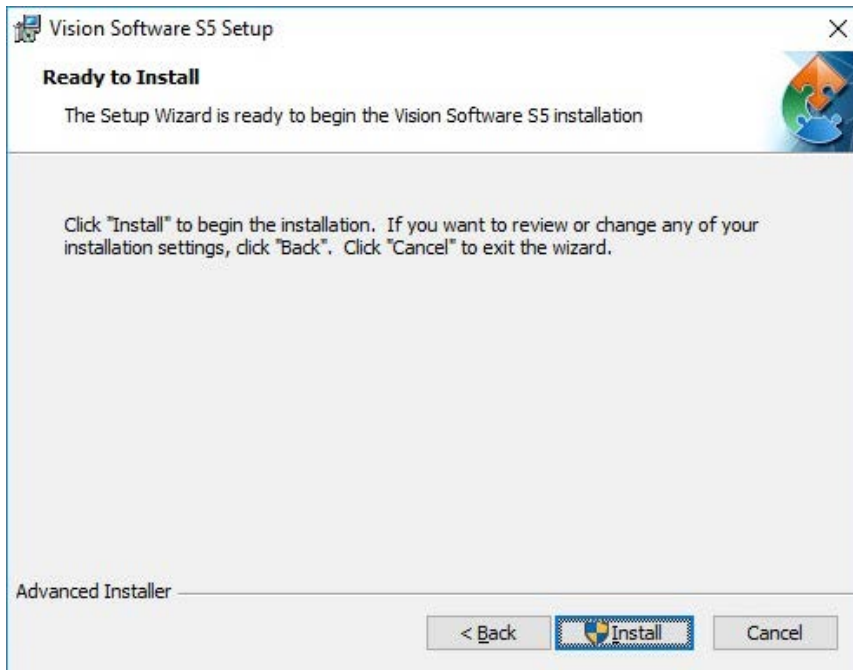
Click on the Install Vision Software button.



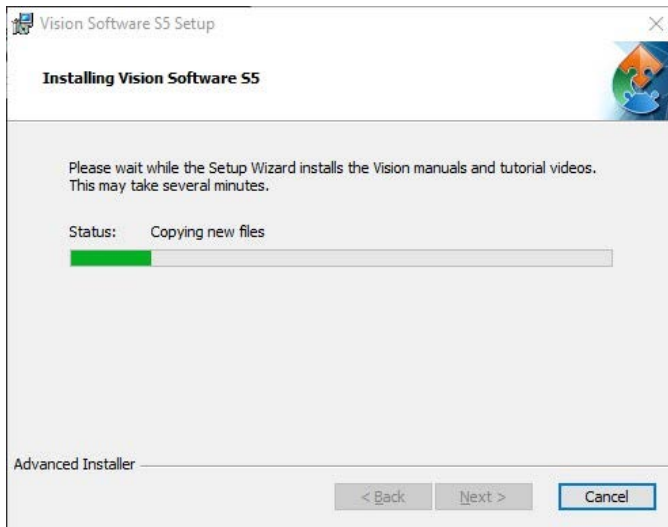
The Vision S5 Software Wizard will guide you through the process of installing the software. Press Next to continue.



Press Install to continue



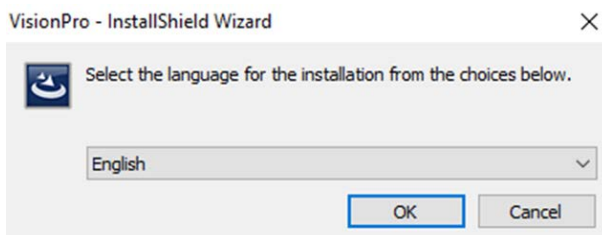
Setup wizard will install the program.



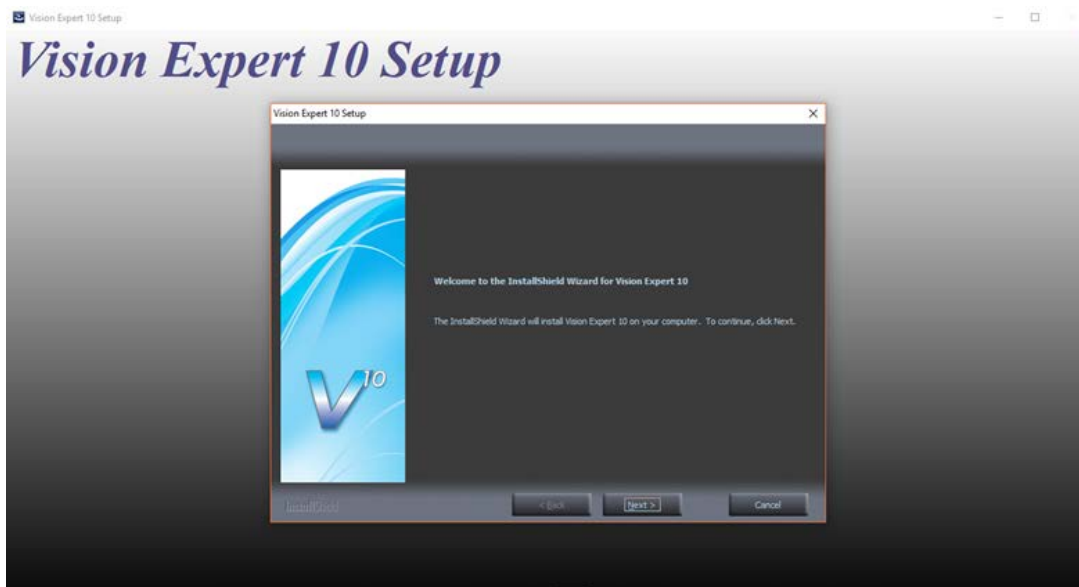
Select Finish to continue the software installation.



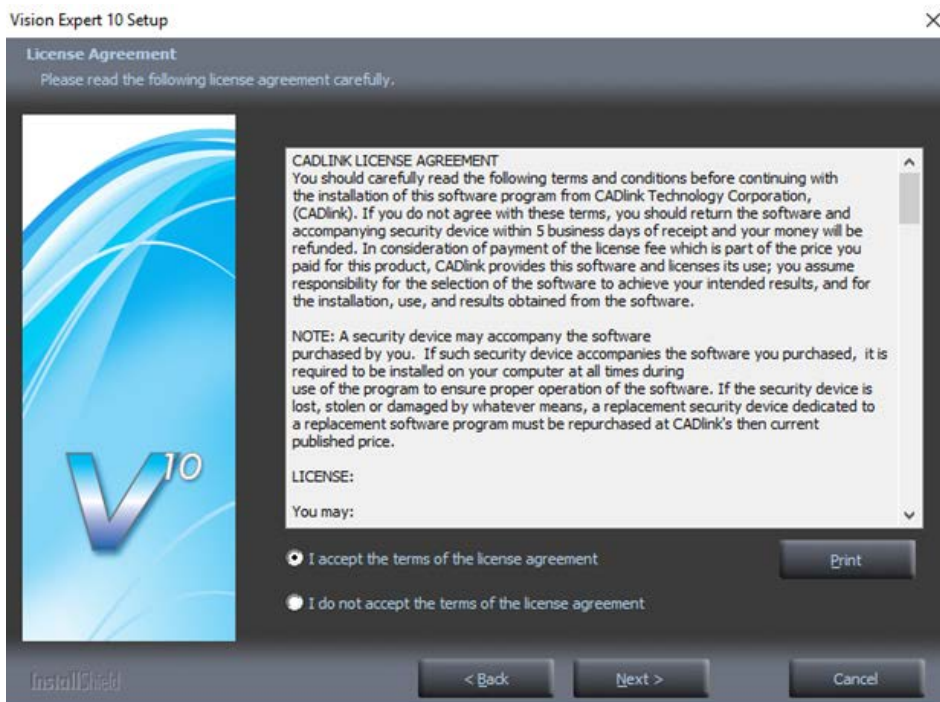
Choose your preferred language and click ok.



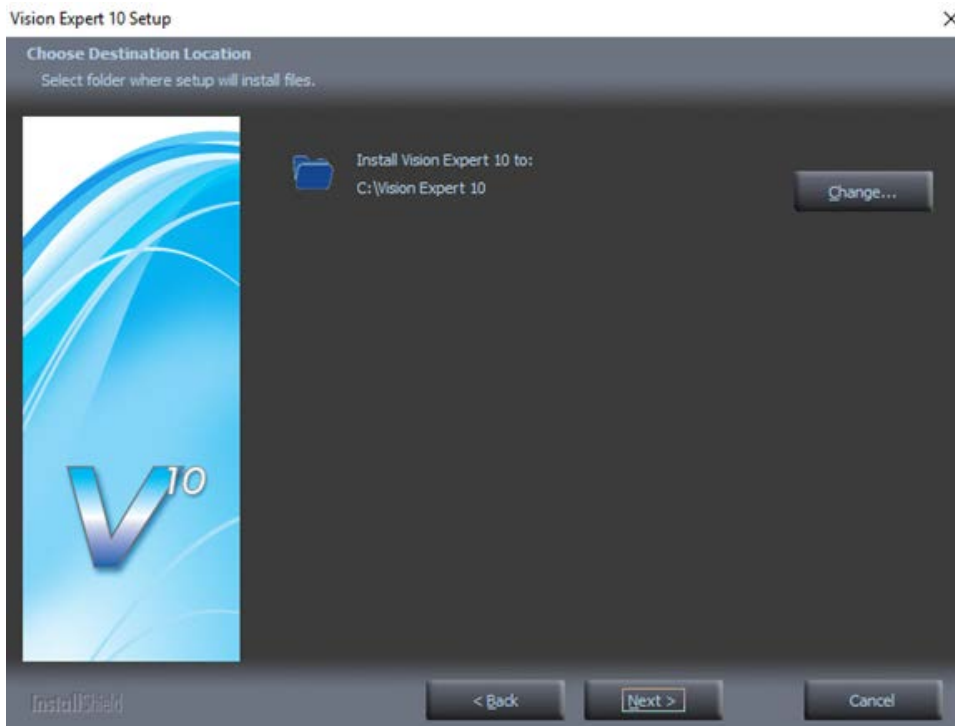
The Vision 10 Setup Screen will appear. Press Next.



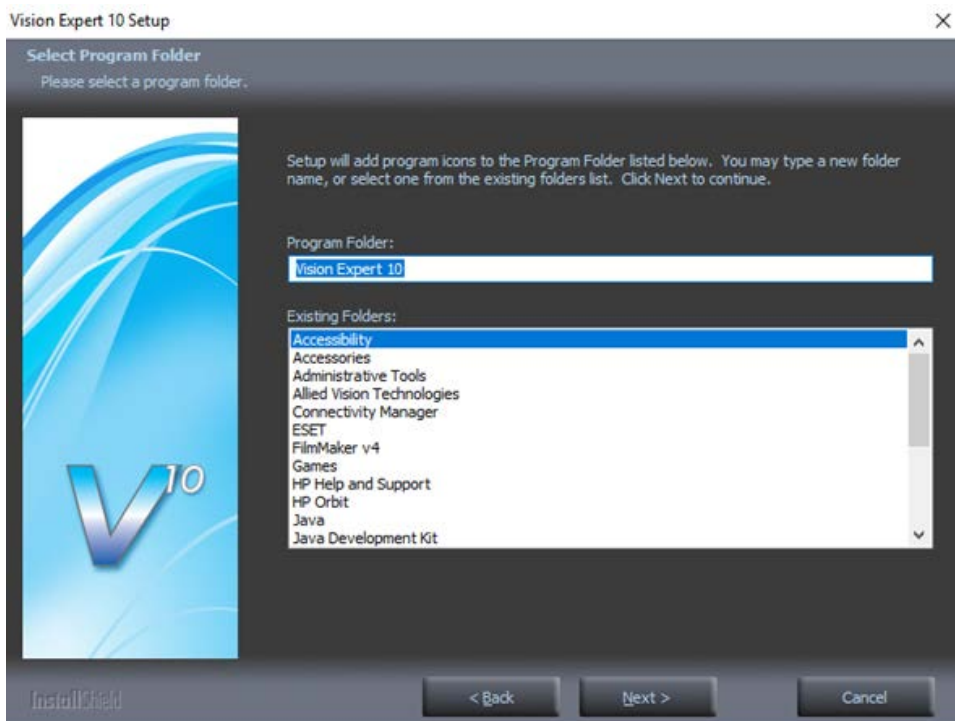
After accepting the license agreement, click on the Next button.



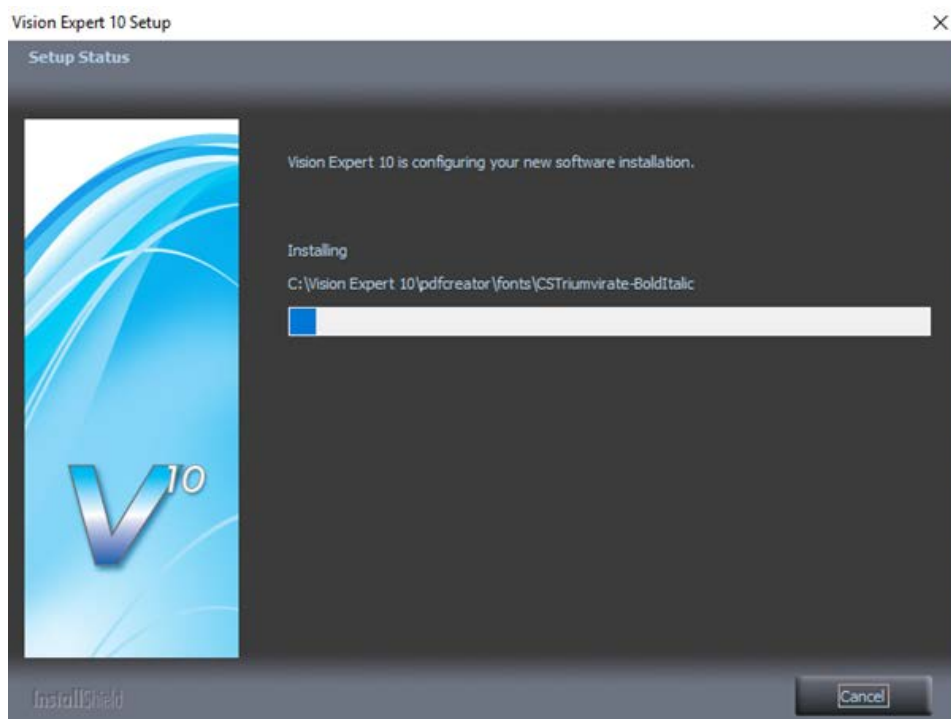
Select Next (or change the destination folder - not recommended).



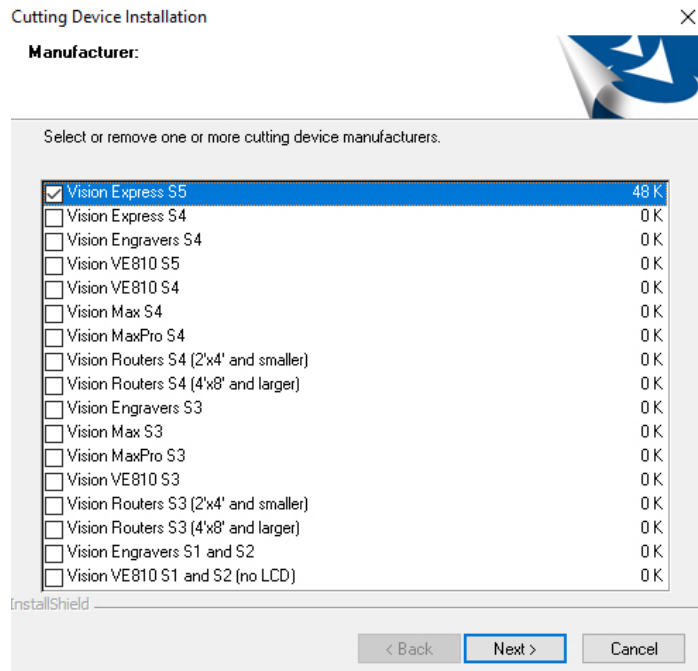
Select Next to create the folder.



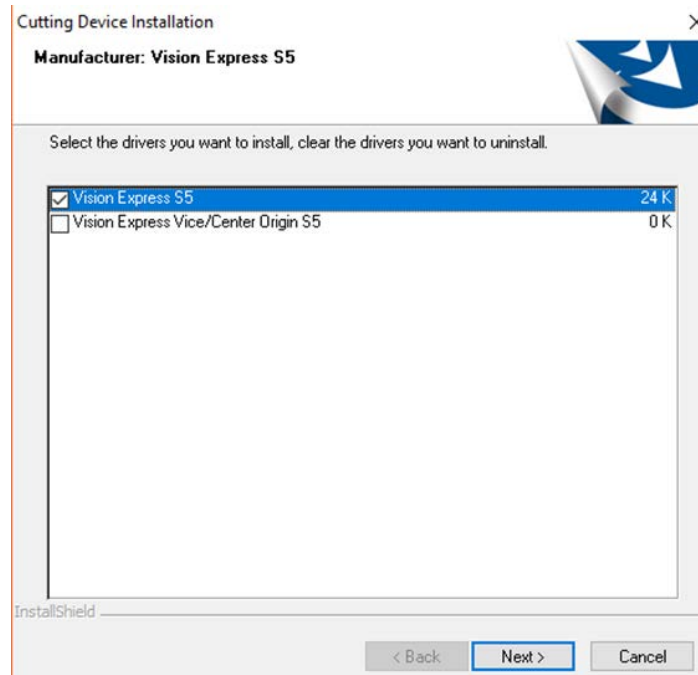
The installation will continue.



Select the Vision Express S5 by placing a check mark in the box to the left of Vision Express in the Manufacturer list, then select Next. If you purchase another engraving system from Vision, it can be added to the machine list at a later date from within the Vision software.



Select the Vision Express S5. Note – The Vision Express Vice/Center Origin S5 is used when using the center vice accessory.



Select Continue to install True Type fonts and Vision Engraving Fonts on your computer.

Font Installation

Welcome to the Vision Expert Font Installation Wizard. To use a font in Vision Expert, it must be installed.

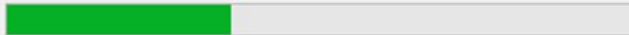
Clicking Continue will start the installation of TrueType fonts, Vision Pro VEF fonts, Corel WFN fonts and Adobe Type1 fonts.

Install TrueType Fonts

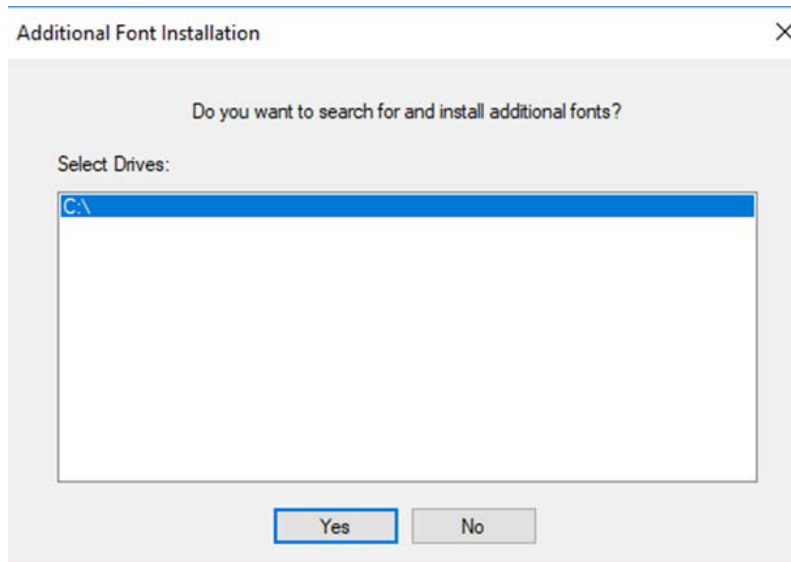
Now installing fonts that are present on your system.

Searching for fonts...

77 fonts found.

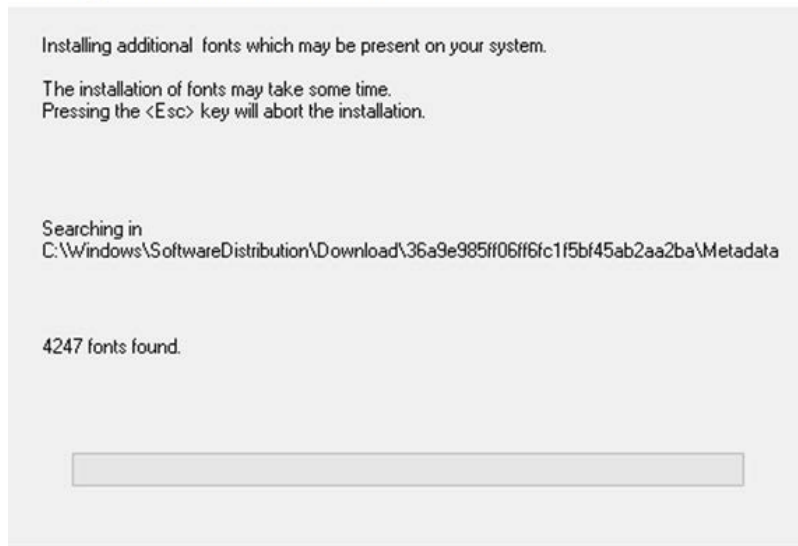


Click yes to install all additional fonts from your C:\ Drive.

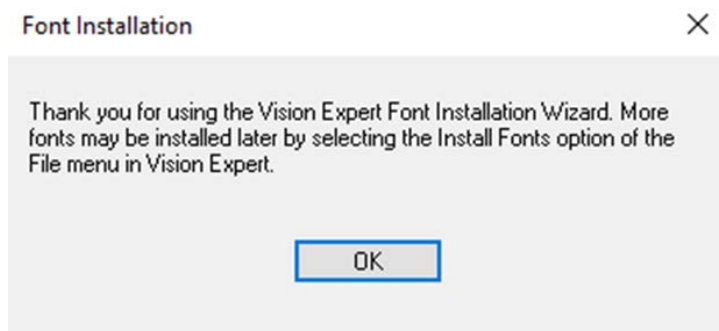


All system fonts will be installed.

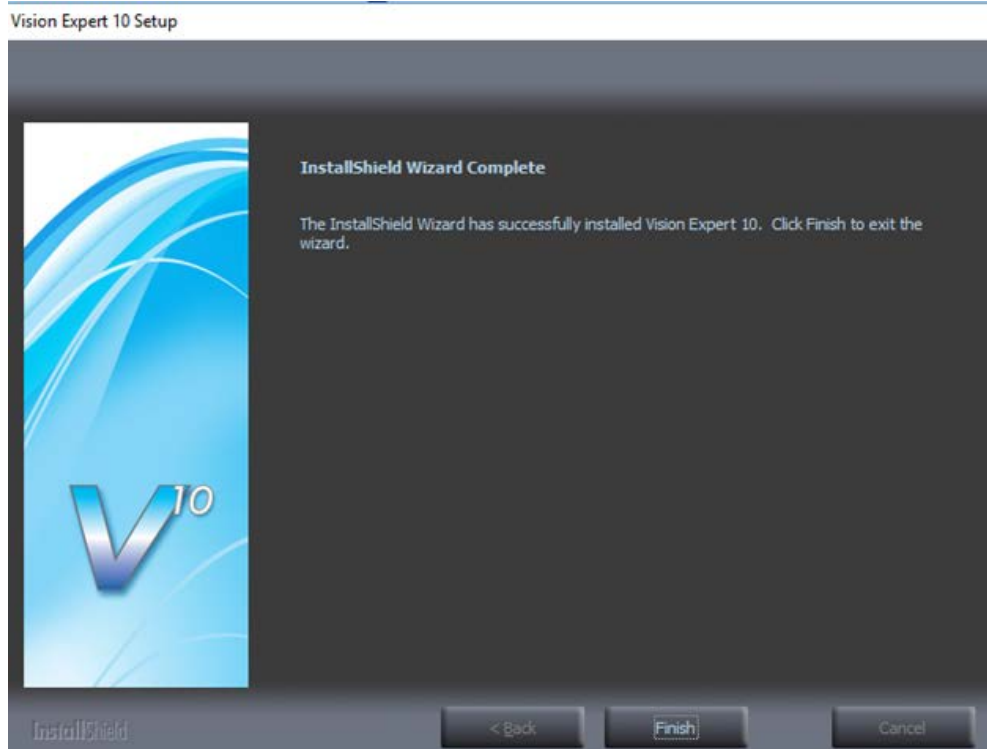
Installing Additional Fonts On Local Disks



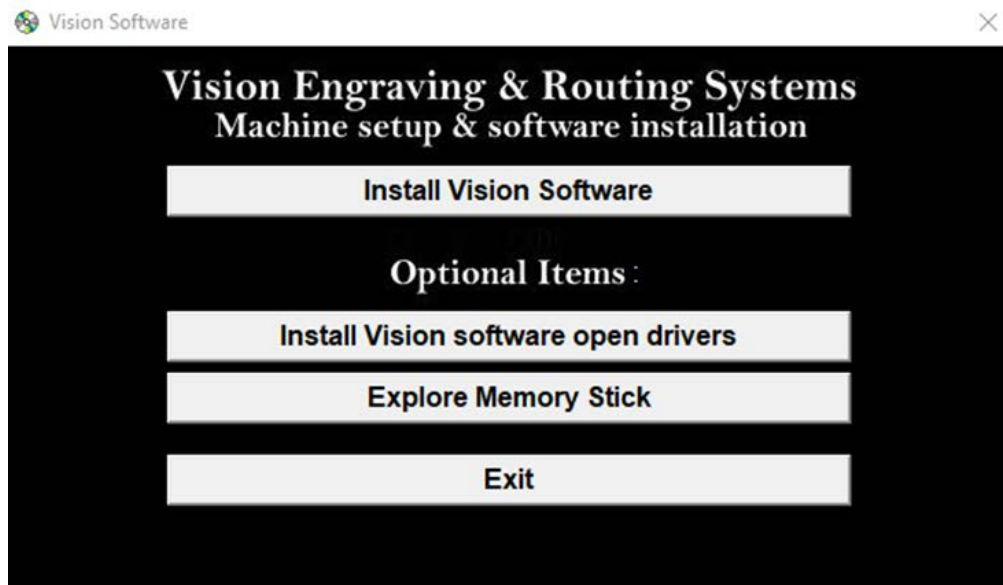
Press OK



Press on the Finish button.



Press the Exit button .

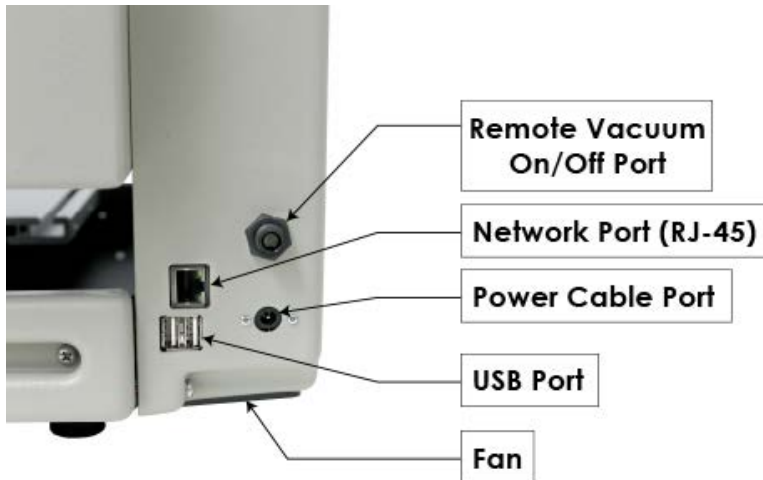


The Vision manuals icon should now appear on your computer's desktop along with an icon for your version of Vision 10 software.



3 Machine Setup

On the rear of the Express, there are four connection ports. The input power, the RJ-45 Ethernet port, the USB port and the remote vacuum chip removal system on/off port.



Connect the power supply cord to a 100 - 240 volt AC power source. Then plug the power cable into the port on the back of the machine. Plug one side of the network cable (black network cable) to the back of the machine and the other side to either the PC Ethernet port, a network switch box or a company network port.

NOTE: The Ethernet crossover cable is gray and should not be needed.

If the emergency stop screen appears on the LCD when the machine is powered on, then the emergency stop button is pressed in. Release the button twisting it until it "pops up". This will clear the emergency stop screen.

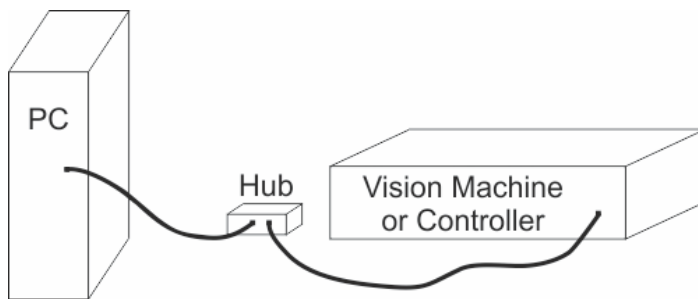
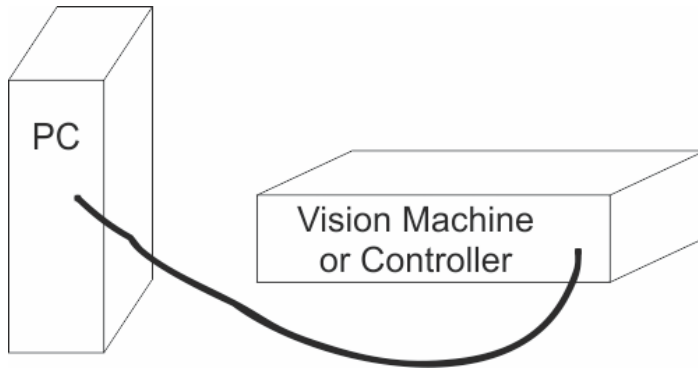


The Express IP address configuration setup will vary depending on how it is connected to the PC.

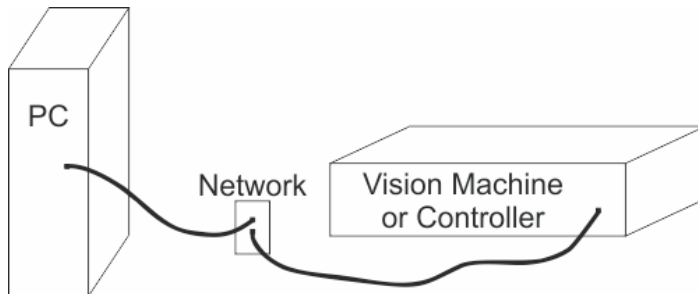
The two options for connecting the Express to the computer are:

- Direct connection to the computer or direct connection using a network hub or switch. Both of these

methods require the same setup.



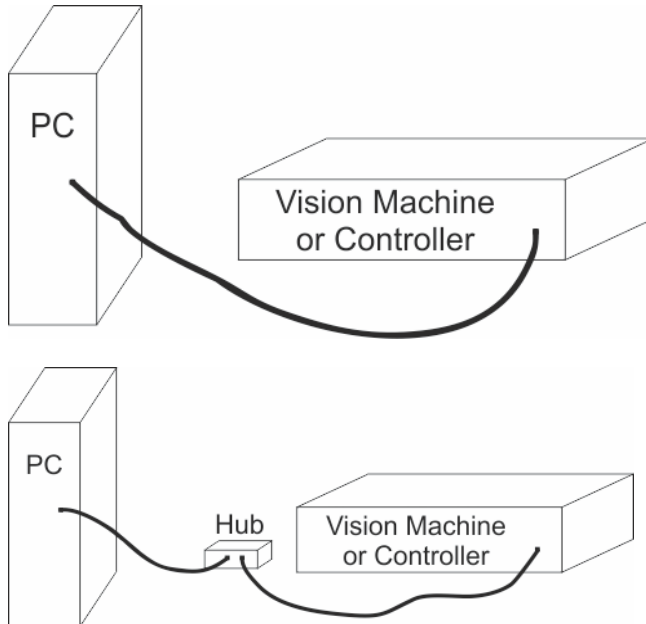
- Connection through a company network



Follow the steps from one of the two sections below to configure the IP address depending on the connection type above.

3.1 Direct Connection to Computer

Direct connection to the computer or direct connection using a network hub or switch.

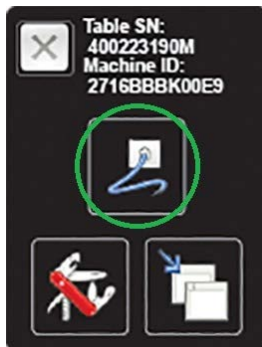


Once the machine is connected directly to the computer's network port or is connected directly to a network hub or switch with the black Ethernet cable, power the machine on. The power switch for the Express is located on the power supply box for the machine. Once the machine has initialized, the home screen will appear on the LCD screen.

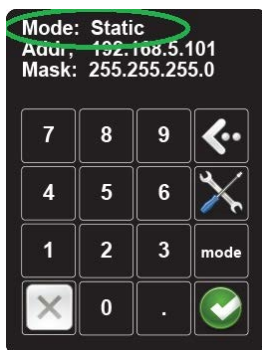
Select the Settings Screen icon.



Select the Connectivity Screen icon.



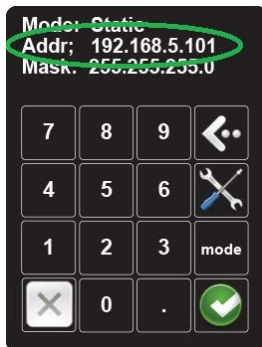
Confirm that the LCD shows the Mode is set to static.



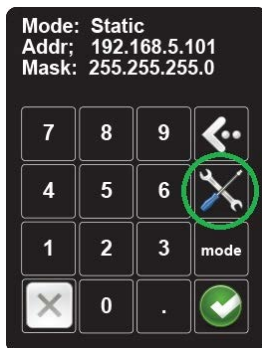
If the Mode displays DHCP, press the mode icon. This will change the Mode to display Static.



Confirm that the LCD shows the Address is set to 192.168.5.101.

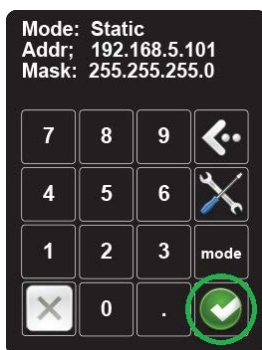


If the Address is not set to 192.168.5.101, it will need to be changed. Press the tools icon.



Enter the numbers 192.168.5.101 with the numbers on the LCD. If you make a mistake, you can press the left arrow to erase a number.

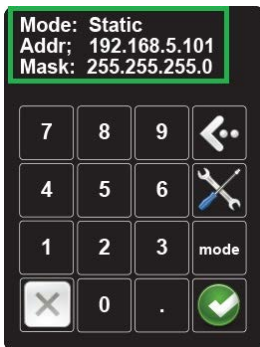
Press the green check mark to accept the value.



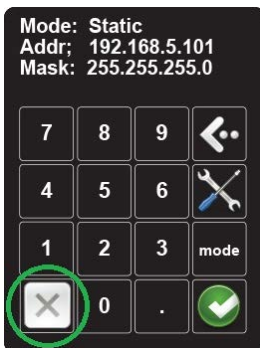
The Mask value will be blank. Press the green check mark a second time and the mask will change to 255.255.255.0.

If the Mask does not change to this value, enter it with the numbers on the LCD.

The LCD should now look like below:



Press the X to exit the connection screen.



Press the X to return to the home screen.

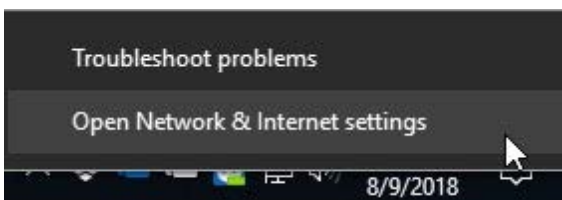
NOTE - This follow section is shown on a Windows 10 PC. For Windows 7 or Windows 8, the screens are slightly different.

The IP address of the computer IP address will need to be set to match the machines network settings.

To set the computer's IP address, right click on the network icon in the lower right corner of the Windows desktop screen.

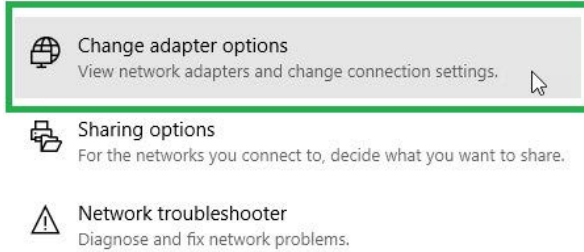


Select "Open Network & Internet settings". (In Windows 7 and Windows 8 select "Open Network and Sharing Center")

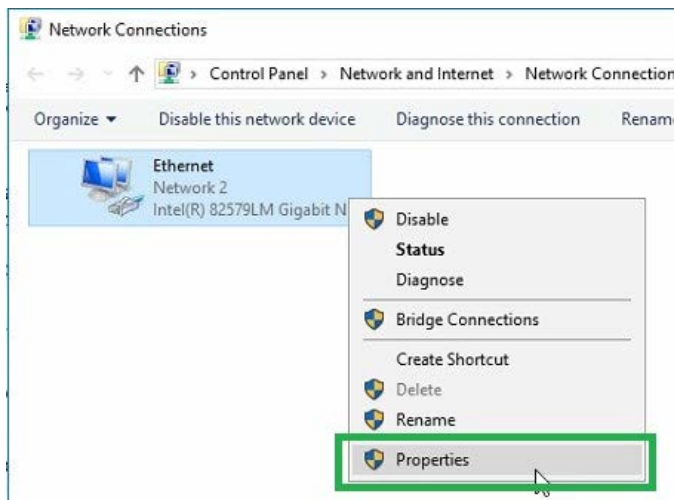


Select "Change adaptor options". (In Windows 7 and Windows 8 select "Change adapter settings")

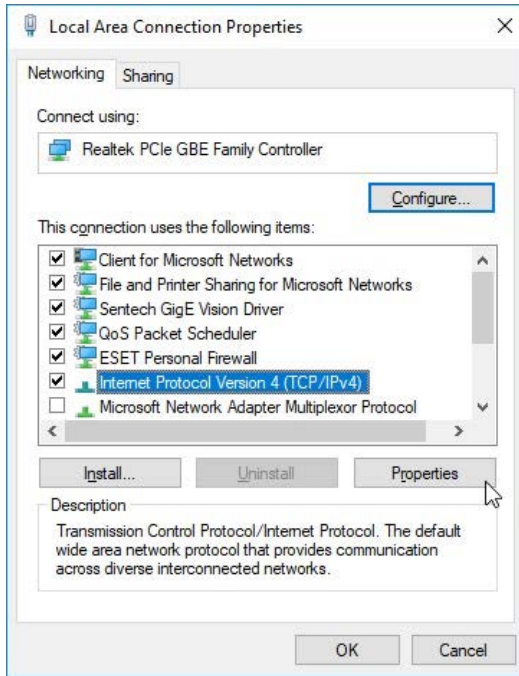
Change your network settings



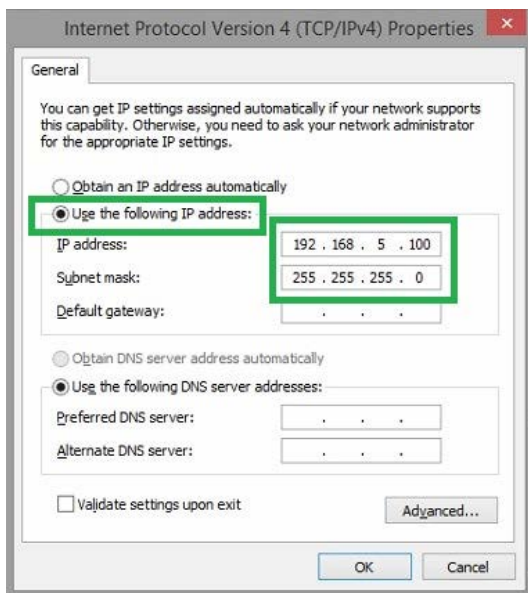
Right click on the Ethernet adapter shown and select "Properties".



Select "Internet Protocol Version 4 (TCP/IPv5) and select "Properties".



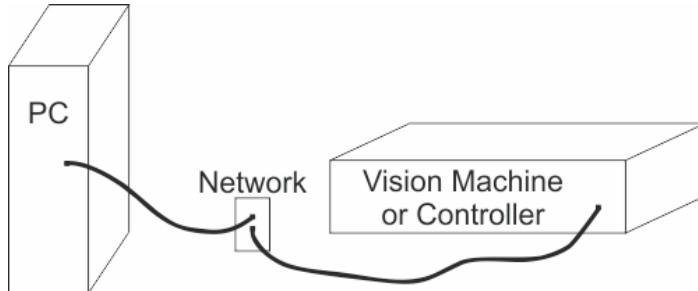
Select "Use the following IP address:" and enter 192.168.5.100 for the IP address and enter 255.255.255.0 for the Subnet mask.



Select OK. The Windows network settings are the machine are now configured.

3.2 Network Connection

Connecting through an office network

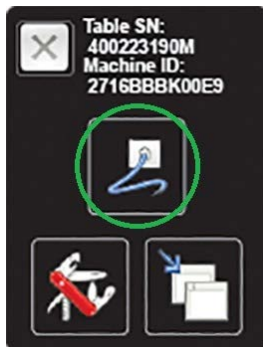


Once the machine is connected to the company network port, power the machine on. The power switch for the Express is located on the power supply box for the machine. Once the machine has initialized, the home screen will appear on the LCD screen.

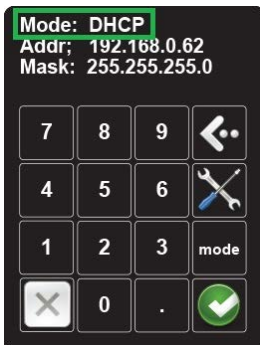
Select the Settings Screen icon.



Select the Connectivity Screen icon.

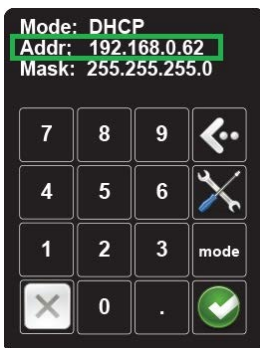


Confirm that the LCD shows the Mode is set to DHCP.

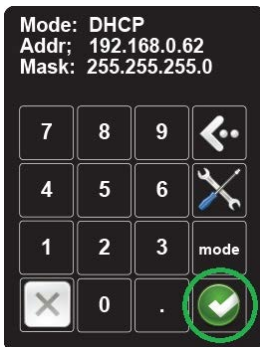


If the Mode displays Static, press the mode icon. This will change the Mode to display DHCP.

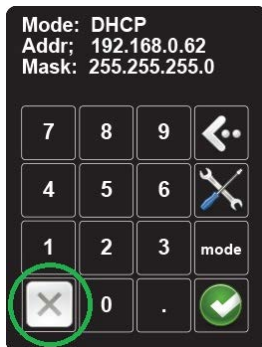
Make a note of the address that is displayed. This will be needed at a later step in the setup. NOTE: If an IP address is not displayed, check with your network administrator to confirm that your network is configured for DHCP.



Press the green check mark button.



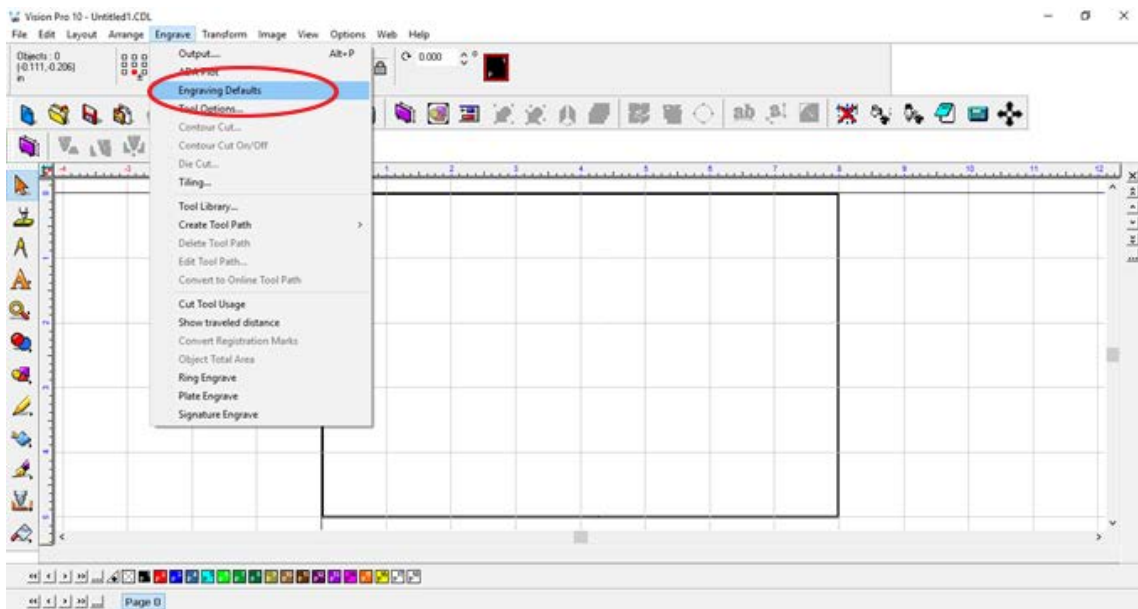
Press the X to exit the connection screen.



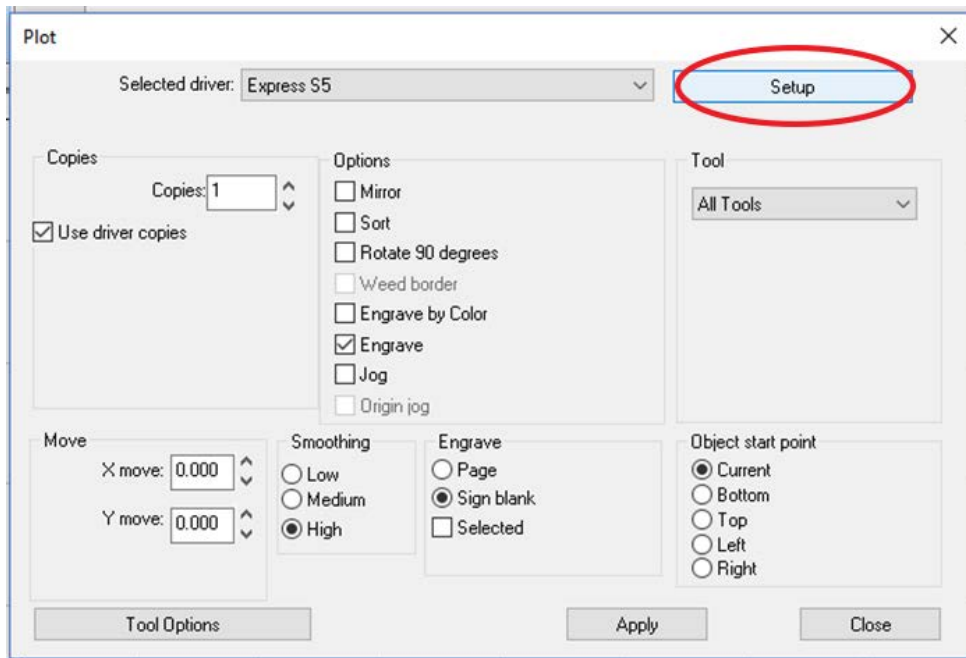
Press the X to return to the home screen.

Open the Vision 10 Software by selecting the Vision Expert 10, Vision Express 10 or Vision Pro 10 icon from the Windows desktop.

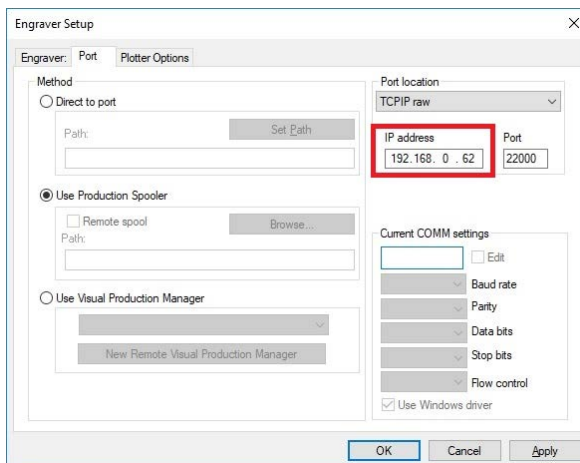
Go to the Engrave menu and select engraving defaults.



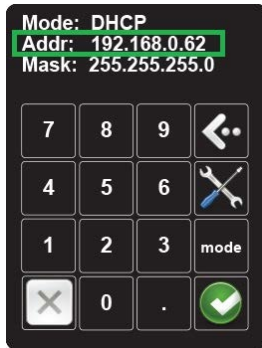
In the Engraving defaults window select the setup button.



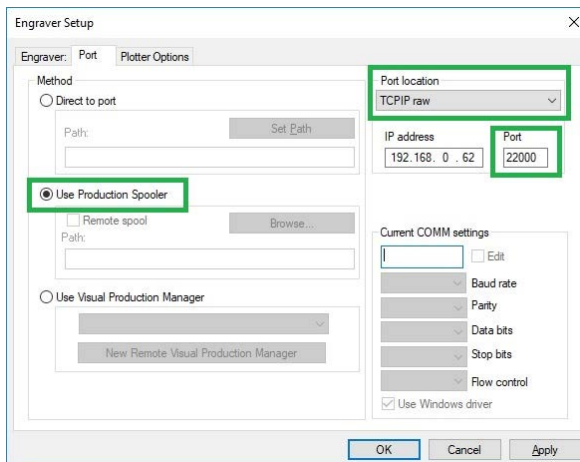
Select the port tab.



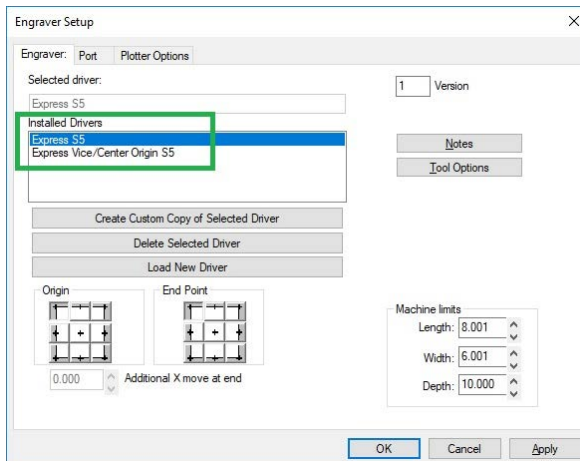
In the "IP address" box, enter the IP address that was displayed on the Vision Express in a previous step. You can see this address from the machine home screen by pressing settings icon and then the connectivity screen icon.



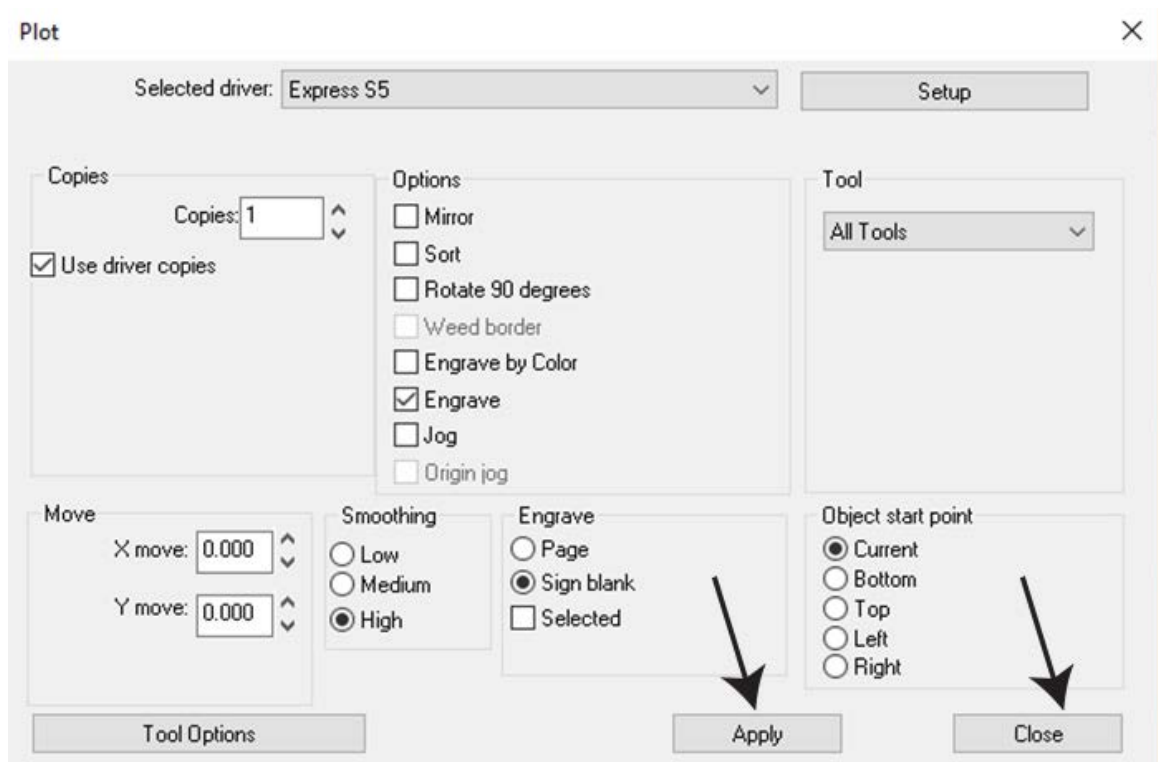
Verify that the method is set to "Use Production Spooler", the Port location is set to "TCPIP raw", and the port is set to "22000".



IMPORTANT: If more than one driver is installed, you must change the IP address in the port tab for all drivers.



Next, press Apply and OK to save the settings.



The machine and Vision software are now configured.

