

Vision MaxPro and Max Series 5 Installation Guide

© 2020 Vision Engraving & Routing Systems



Factory Settings

Red Dot Laser Pointer Offset

X _____ Inches ___ mm ___
Y _____ Inches ___ mm ___

This is ONLY the Installation Guide.
PLEASE review the complete User
Manual for your machine, which will be
installed on your computer after the
software installation is completed.

Vision MaxrPro and Max Series 5 Installation Guide

© 2020 Vision Engraving & Routing Systems

All rights reserved. No parts of this work may be reproduced in any form or by any means - graphic, electronic, or mechanical, including photocopying, recording, taping, or information storage and retrieval systems - without the written permission of the publisher.

Products that are referred to in this document may be either trademarks and/or registered trademarks of the respective owners. The publisher and the author make no claim to these trademarks.

While every precaution has been taken in the preparation of this document, the publisher and the author assume no responsibility for errors or omissions, or for damages resulting from the use of information contained in this document or from the use of programs and source code that may accompany it. In no event shall the publisher and the author be liable for any loss of profit or any other commercial damage caused or alleged to have been caused directly or indirectly by this document.

Revised: 5/14/2020

Table of Contents

Part I Introduction	4
1 Computer Requirements.....	4
2 Vision Software Security Device.....	5
3 General Electrical and Facility Requirements.....	6
Part II Machine Setup	6
1 Locating the Engraver.....	6
2 Installation Layout Diagrams.....	8
MaxPro and Max Layout Diagram	8
3 Connections.....	9
4 Network Connection.....	12
5 Vision Mov UI Software Installation.....	17
6 Vision Software Installation.....	25

1 Introduction

This guide contains information to prepare the owner of a Vision Max and MaxPro for the proper installation of their machine. It is the customer's responsibility to read through this guide and make sure the work area, electrical and computer requirements are met. If for any reason, there are questions about these requirements, please call your Vision representative as soon as possible.

In the following sections, the complete machine and Vision software installation will be outlined.

Please call or email your Vision distributor or the Vision service department at Vision for assistance if you have any questions with this procedure. The Vision service department phone number is 1-602-439-0600 and the email address is service@visionengravers.com.

FOR MORE DETAILED INFORMATION, PLEASE REFER TO THE USER GUIDE FOR YOUR MACHINE INSTALLED WITH THE VISION SOFTWARE. USER GUIDES ARE ALSO AVAILABLE ONLINE AT <http://www.visionengravers.com/support/vision-engraver-manuals.html>

1.1 Computer Requirements

Minimum System Requirements:

CPU:	Intel i5 2.6-3.0GHz
Hard Drive:	5 GB free space
RAM:	8 GB
Operating System:	Windows 10 (32/64 bit) Windows 8 (32/64 bit) Windows 7 (32/64 bit)
	NOTE: Windows updates must ALL be installed
Ports:	1 USB port for security dongle 1 USB port for Ethernet adapter to connect machine

Suggested System Requirements

CPU:	Intel i7 2.6-3.0GHz (or faster)
Hard Drive:	500 GB SSD (or larger)
RAM::	16 GB (or more)
Operating System:	Windows 10 (64 bit)
Ports	1 USB port for security dongle 1 USB port for Ethernet adapter to connect machine

1.2 Vision Software Security Device

IMPORTANT:

The Vision software is available in two versions; one with a USB dongle, and one that is "dongleless" and is loaded on to a USB Memory stick. If your machine was delivered with, or you currently have the silver, white/blue or orange software dongle, DO NOT LOSE IT!

The Vision software will **NOT** run without the dongle plugged into the computer.

USB Stick



Dongles



1.3 General Electrical and Facility Requirements

Machine Model	Requirements
Vision MaxPro or Max	One 110 VAC 15 Amp OR One 220 VAC 10 Amp Single Phase
Optional Equipment Engraving Chip Removal System	Required in addition to the machine power above: One 110 VAC 15 Amp OR One 220 VAC 10 Amp
Optional Equipment Requiring Compressed Air Supply UNIST Misting System NSK 50,000 RPM Spindle	Required in addition to the machine power above: Clean Dry Compressed Air Supply 60 - 90 PSI One 110 VAC 15 Amp OR One 220 VAC 10 Amp Single Phase AND Clean Dry Compressed Air Supply 1 SCFM @ 40 PSI

NOTE: In addition to the above requirements, a standard outlet is required for the computer.

2 Machine Setup

2.1 Locating the Engraver

1. Locate all equipment indoors on a flat surface and on a solid foundation.
2. Temperature must remain between 40°F and 85°F.
3. Do not expose machine to direct sunlight, rain, vibration, dampness, or explosive environments.
4. Machine dimensions:
 - Max - 36" x 26" x 32", shipping weight = 295 lbs.
 - MaxPro - 32.5" x 28" x 26", shipping weight = 300 lbs.
 - NOTE:** If you use our freight company, the equipment will be placed on the ground and a pallet jack or other device is necessary to move the crate into your facility.
5. The sides of the crate unscrew, but it will take four people to remove the engraver from the shipping crate.
6. A distance of at least 36" is recommended around all sides of the machine to ensure easy operating, material handling, cleaning, maintenance and safety.
7. Typically, the engraver is oriented as shown in the layout diagrams.

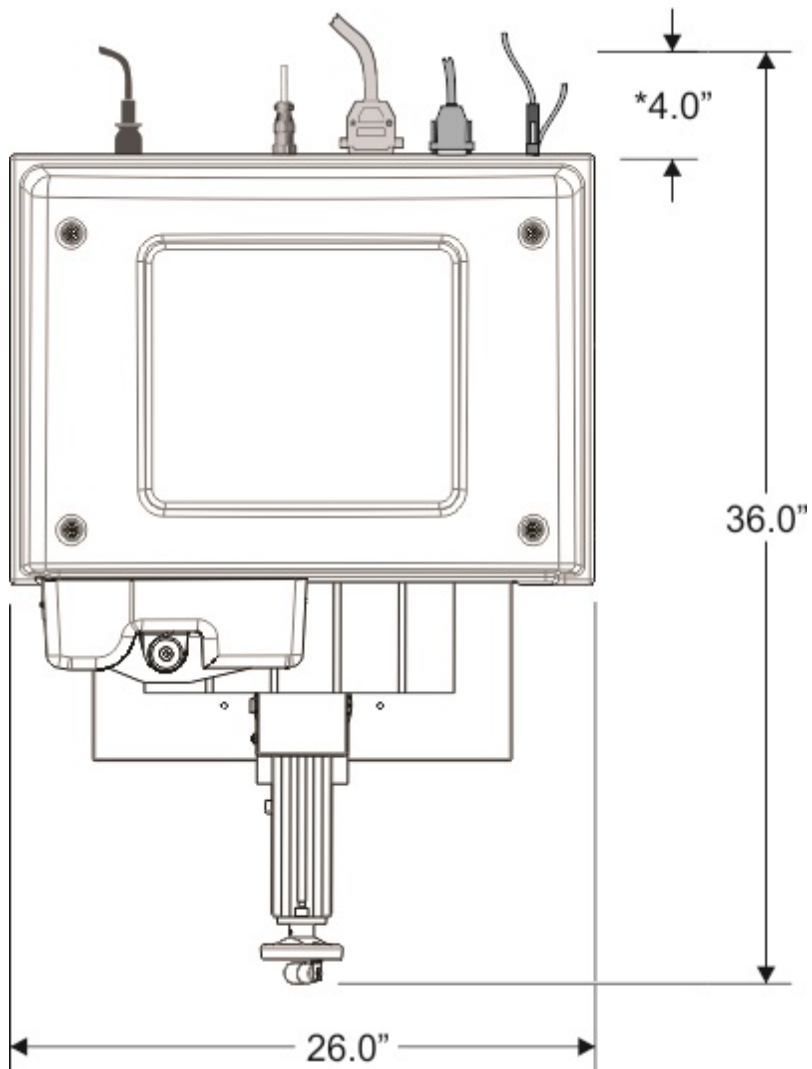
8. Cutters and sample materials must be available before the scheduled installation/machine orientation date.
9. If a chip extraction unit has not been purchased from Vision, it is highly recommended that one is available for the installation/machine orientation.
10. If you ordered the NSK High Frequency Spindle, a clean air source is required. The air requirement is 1 CFM @ 40 psi.

2.2 Installation Layout Diagrams

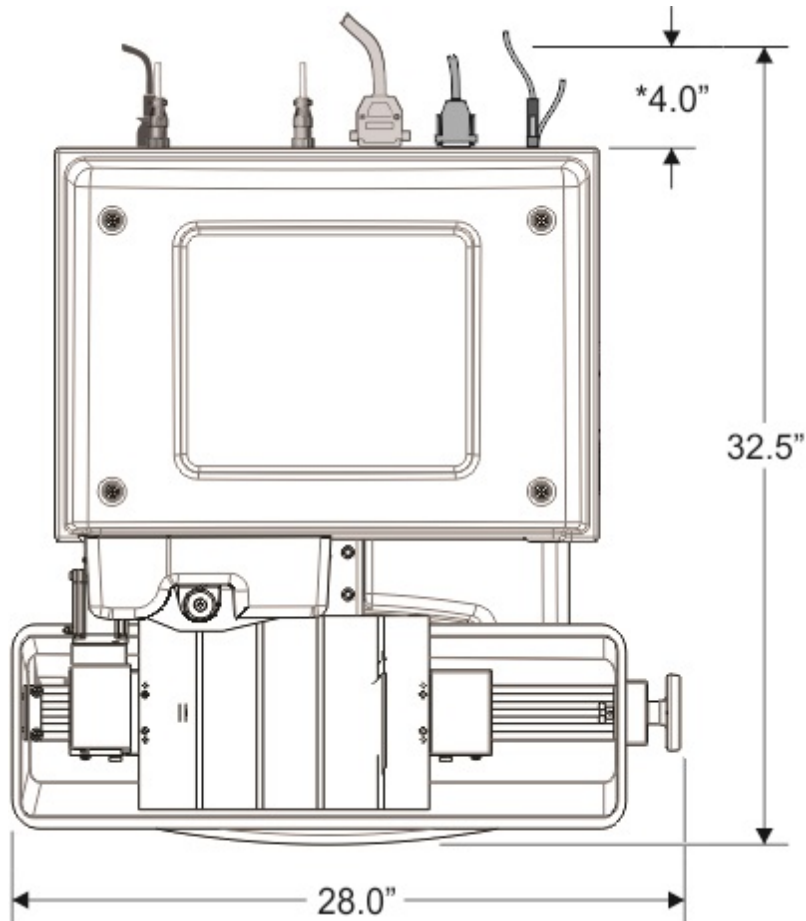
2.2.1 MaxPro and Max Layout Diagram

* This dimension is added to allow for clearance on the rear of the machine for cables and for air flow to the cooling fan.

Vision MAX



Vision MAX PRO



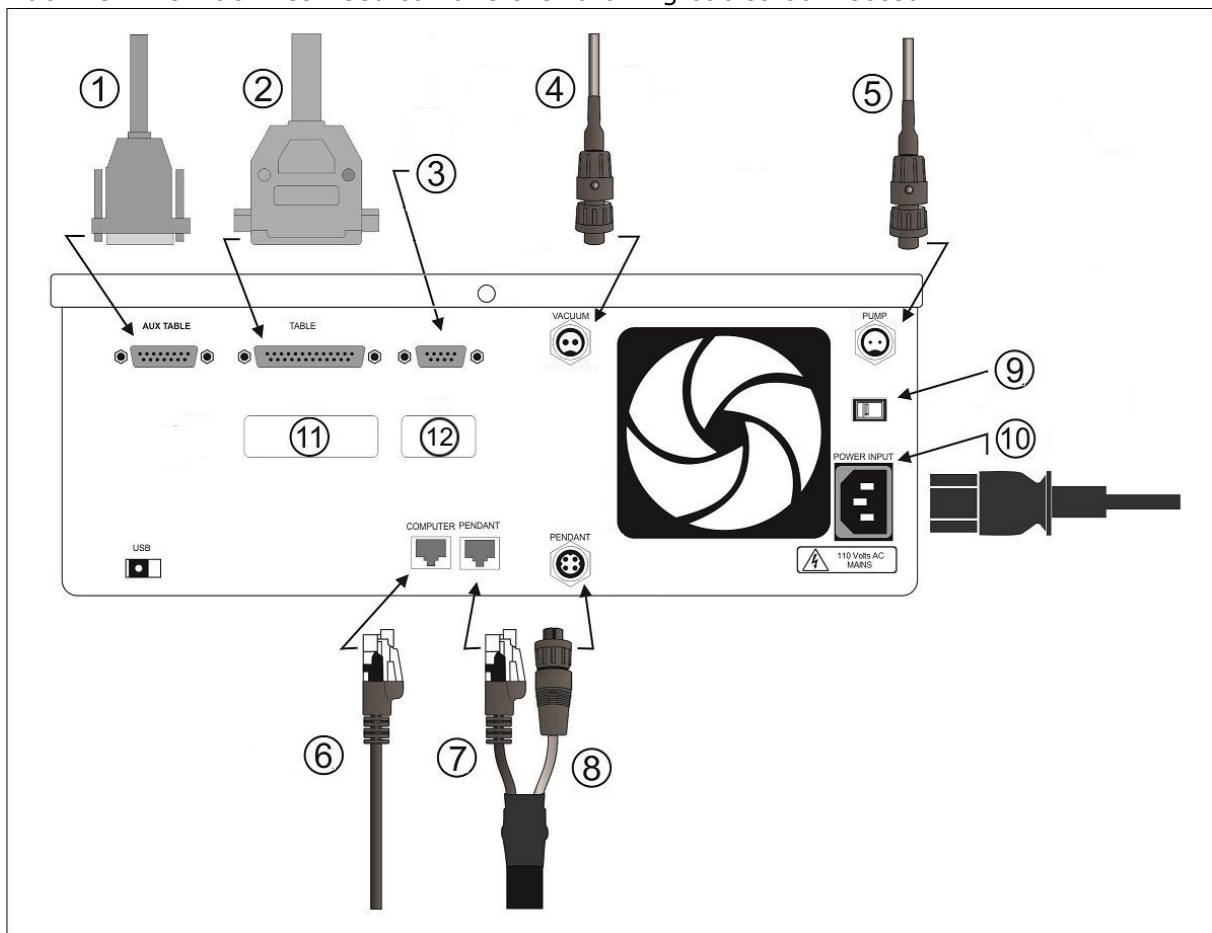
2.3 Connections

The Vision Max and Max Pro machines have an integrated controller inside the base of the machine. The machines need to have the following cables connected to the controller. Plug in all of the cables unless noted below.

1. The Aux Table plug connects to a 15 pin connector. This is for the rotary axis.
2. The Table plug connects to a 25 pin connector. This is for the X, Y and Z axis.
3. This 9 pin connector is not used at this time.
4. The Vacuum plug connects to a 2 pin round connector that comes from an optional vacuum chip removal system. If your machine is equipped with the optional Vacuum Chip Removal System, a remote On/Off cable is connected from the controller to automatically turn the vacuum pump on and off when the job is being run. **NOTE:** This will not be used if a vacuum chip removal system is not configured with the machine.
5. The Pump/Mist plug connects to the water pump on the MaxPro. This is not used with the Max unless a misting system is used.
6. The Computer plug connects to the Ethernet port on the computer. This is typically plugged into the USB to Ethernet adapter supplied with the machine.

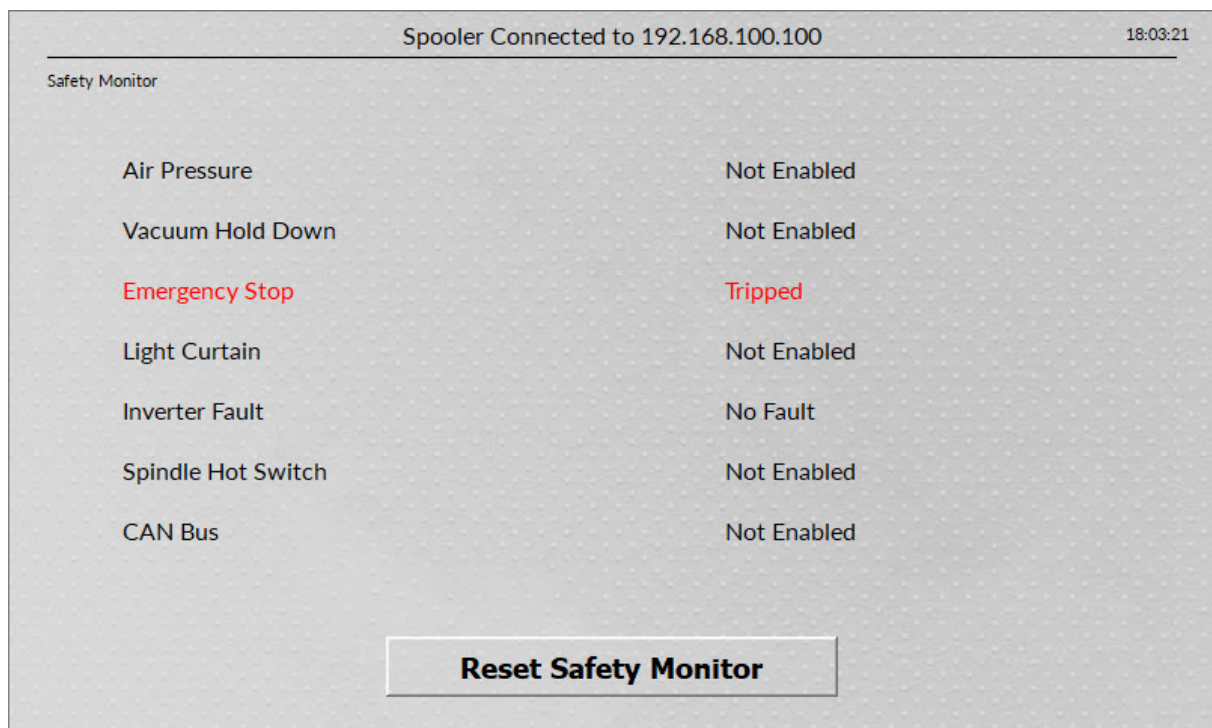
7. The Pendant network plug connects to the back of the touch screen LCD pendant.
8. The 4 pin Pendant plug connects to the back of the touch screen LCD pendant.
9. The power on/off switch is used to power the machine on.
10. The power input plug connects to either the power source. **IMPORTANT:** Only use the 110 volt AC or 220 volt AC power source that is displayed on the yellow label. Using the incorrect input power can cause serious damage to the machine.
11. This 25 pin connector is not used at this time.
12. This 15 pin connector is not used at this time.

The Vision Max and Max Pro machines have an integrated controller inside the base of the machine. The machines need to have the following cables connected.



Vision Series 5 pendant (rear view)

NOTE: If the emergency stop screen appears on the LCD when the machine is powered on, then the emergency stop button is pressed in. This can either be the emergency stop button on the table or the emergency stop button on the pendant. Release the button twisting it until it "pops up". This will clear the emergency stop screen.



The machine is now connected. Please continue to the network setup section.

2.4 Network Connection

NOTE - This following section is shown on a Windows 10 PC. For Windows 7 or Windows 8, the screens are slightly different.

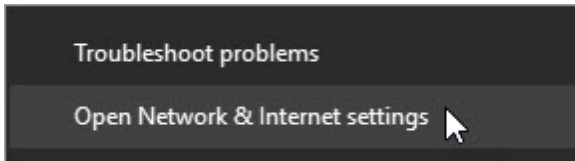
Plug the USB end of the USB to Ethernet adapter into any open USB port on the computer.



Right click on the Windows network icon in the lower right corner of the Windows screen.





Select "Open Network & Internet settings".



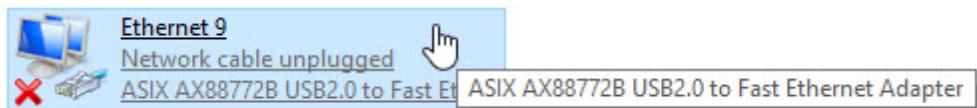
Select "Change adapter options".

Change your network settings

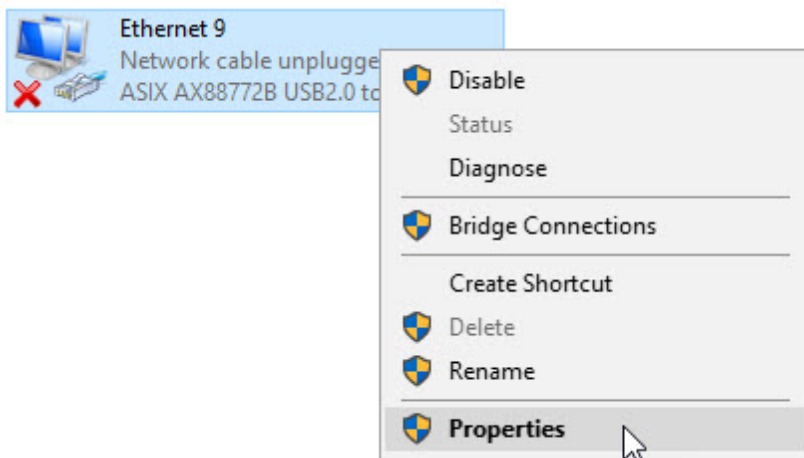
 **Change adapter options**
View network adapters and change connection settings. 

 **Sharing options**
For the networks you connect to, decide what you want to share.

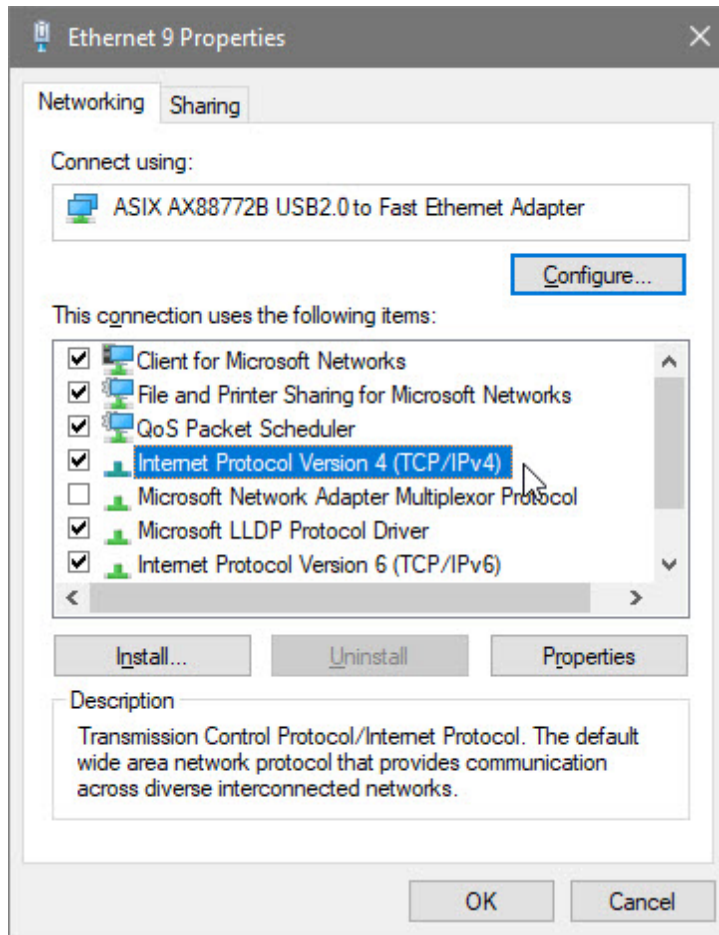
Right click on the Asix USB Ethernet connection.



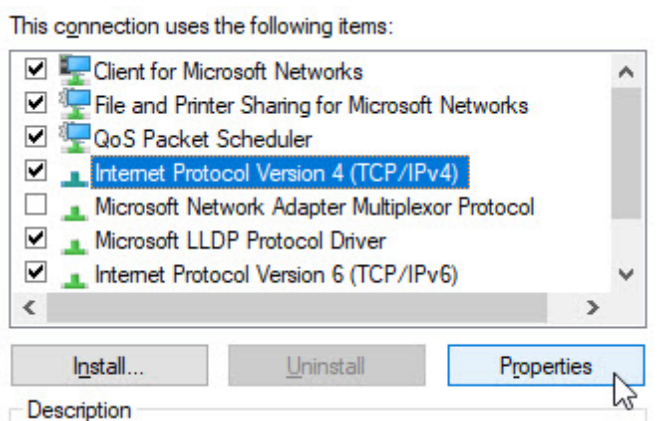
Select Properties.



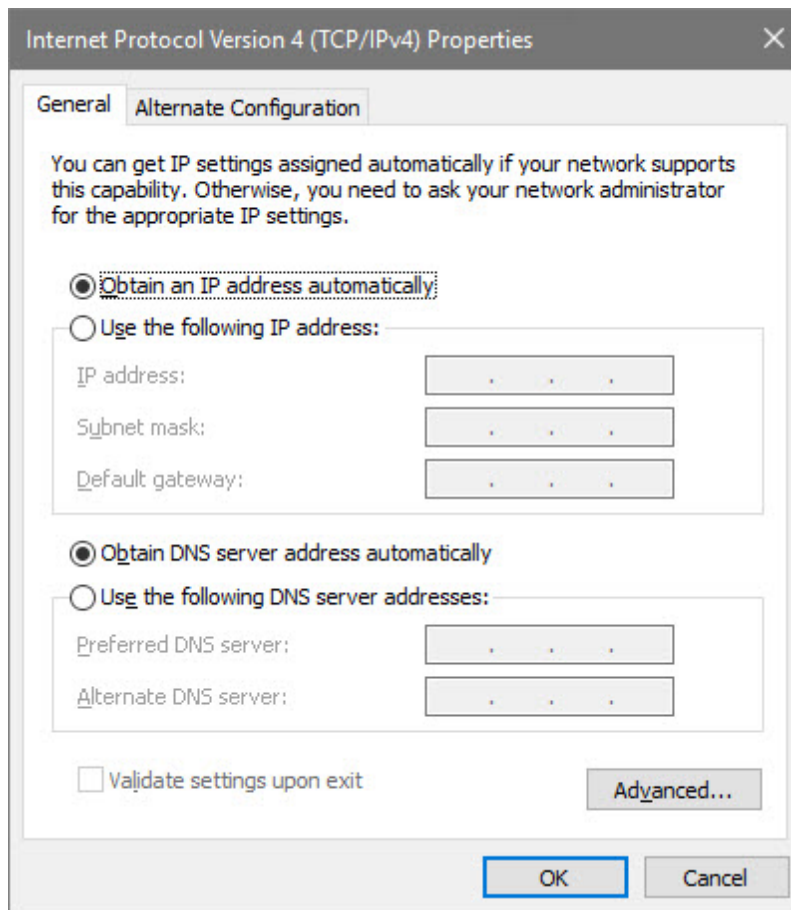
Select "Internet Protocol Version 4 (TCP/IPv4)".



Select Properties.



The screen below will appear.



Enter the settings below.

Select: **Use the following IP address:**

Enter an IP address of: **192.168.100.100**

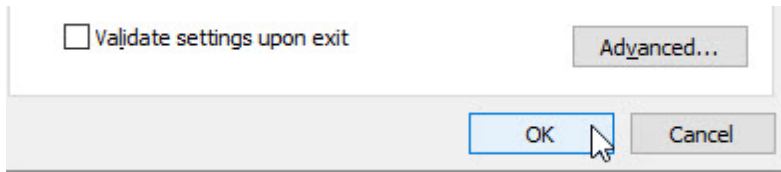
Enter a Subnet mask of: **255.255.255.0**

Obtain an IP address automatically

Use the following IP address:

IP address:	192 . 168 . 100 . 100
Subnet mask:	255 . 255 . 255 . 0
Default gateway:	. . .

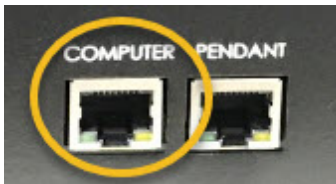
Select OK.



Plug one end of the network cable into the USB to Ethernet adaptor.



Plug the other end of the network cable into the **COMPUTER** connection in the back of the Vision Series 5 controller.



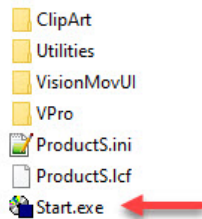
The network connection is now complete. Please continue to the network setup section.

2.5 Vision Mov UI Software Installation

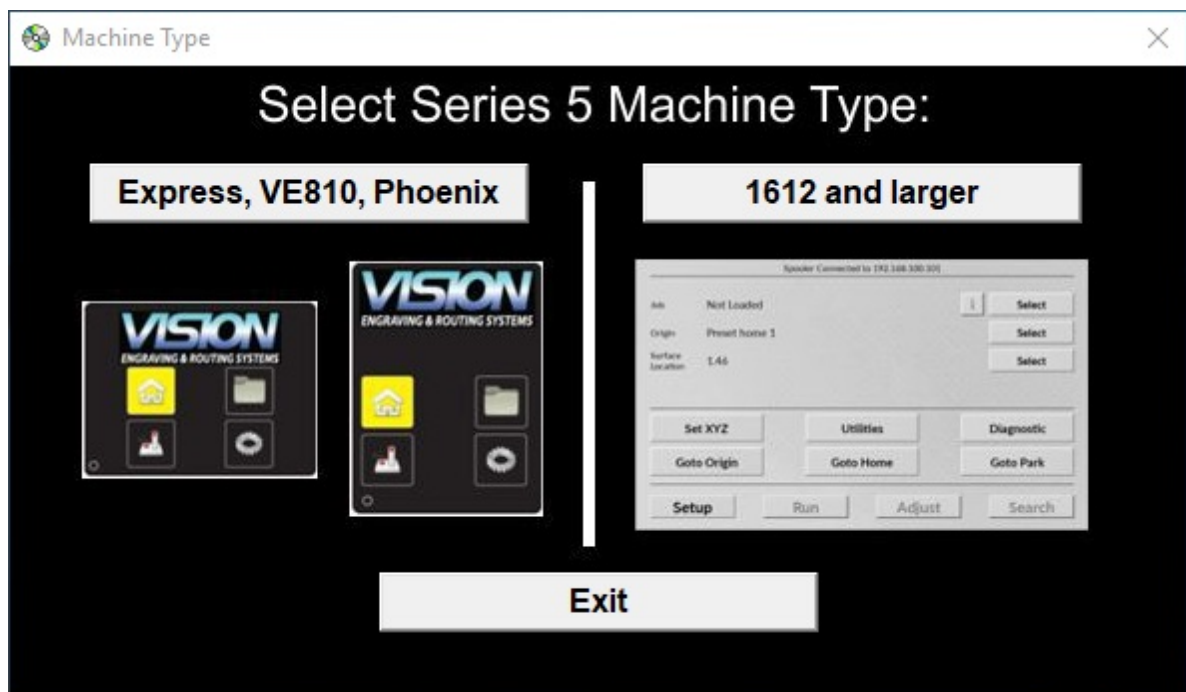
Power the Vision Series 5 controller on with the switch on the front.

Insert the Vision USB dongle into the USB port on the computer. Navigate to the USB dongle in Windows File Explorer.

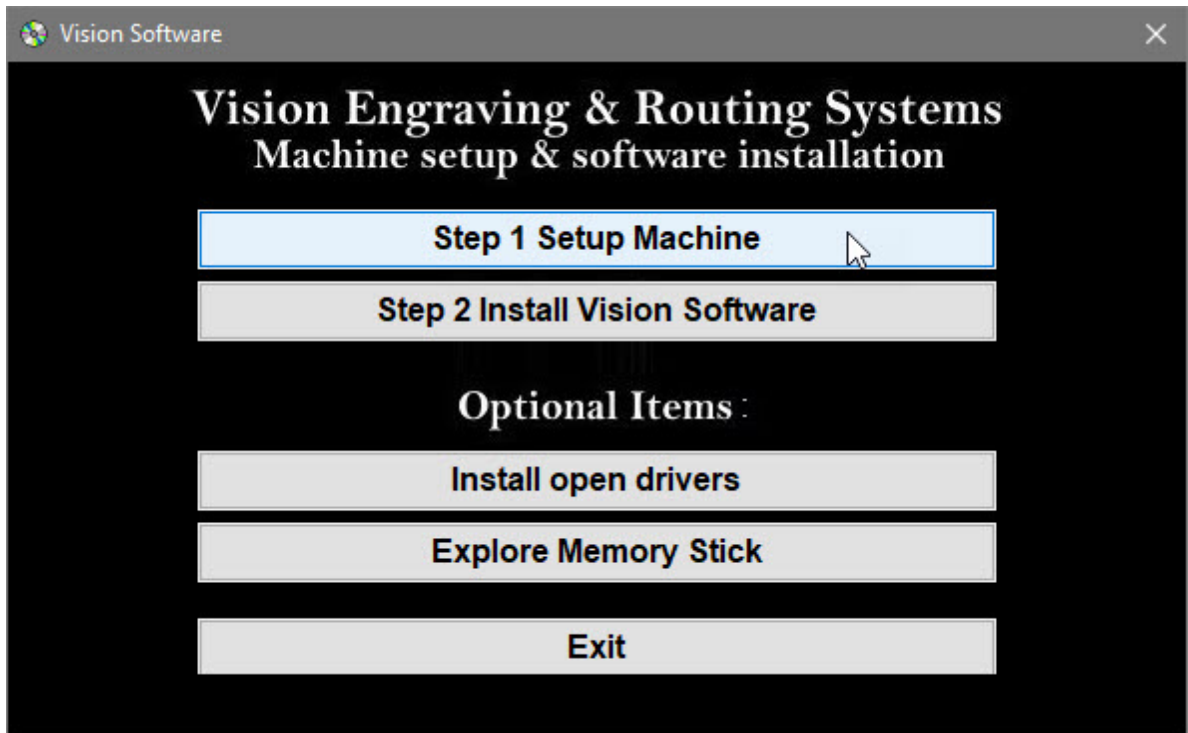
Select the **Start** or **Start.exe** file to begin.



Select **1612 and larger**.

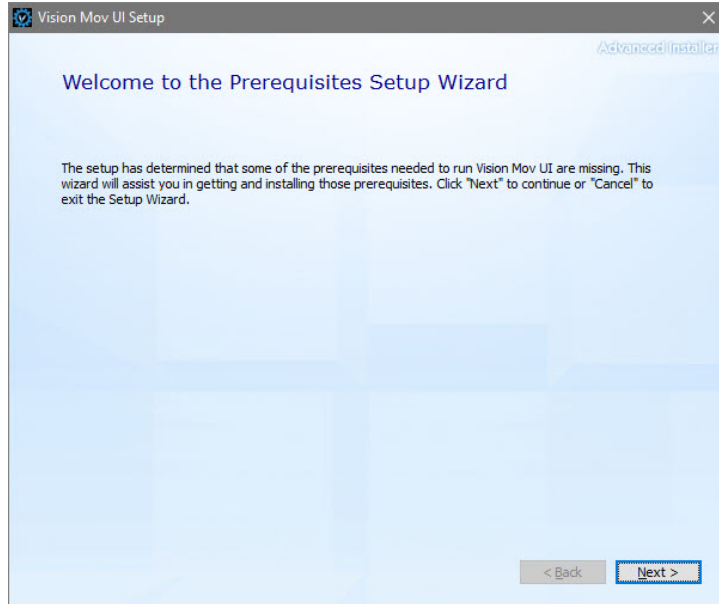


Select **Step 1 Setup Machine**.



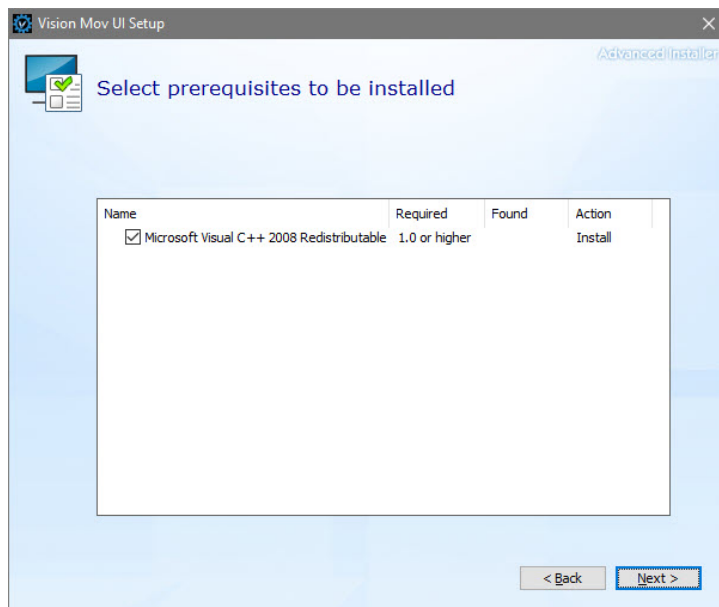
Select **Next** on the "Prerequisites Setup Wizard" screen.

NOTE: This screen will **not** appear if the Windows feature is already installed on the computer.



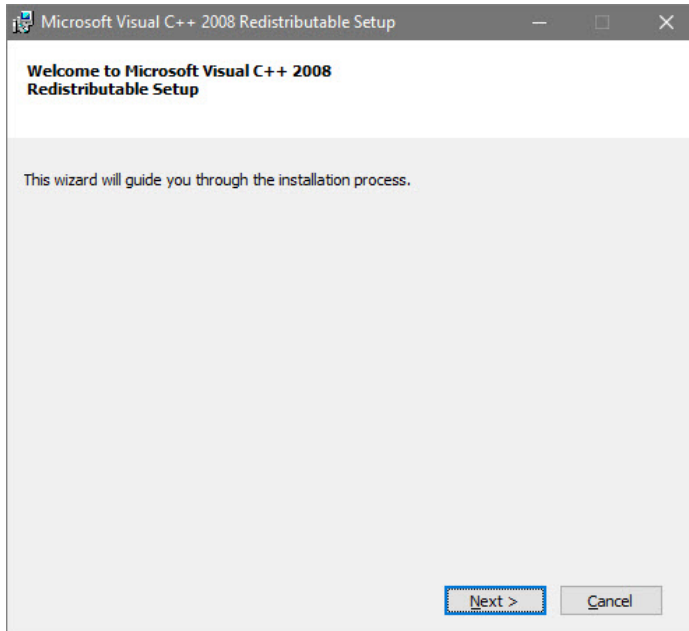
Select **Next** on the "Prerequisites" installation screen.

NOTE: This screen will **not** appear if the Windows feature is already installed on the computer.



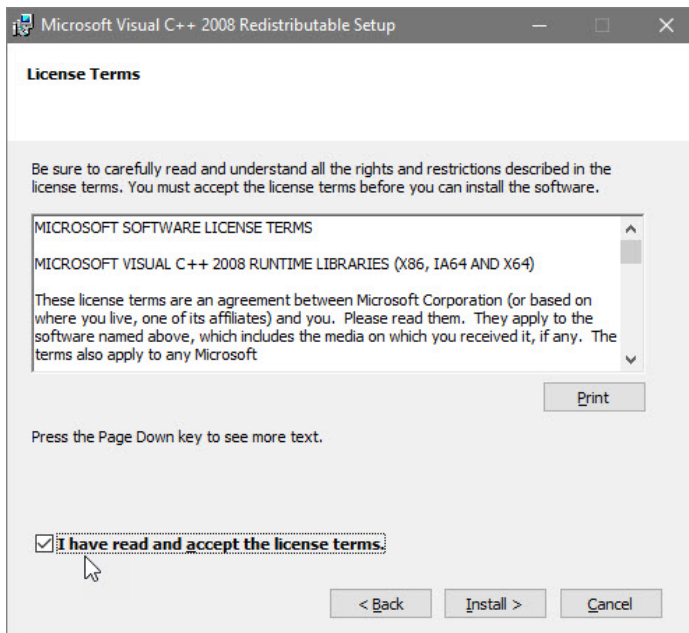
Select **Next** on the "Microsoft Visual C++ installation" screen.

NOTE: This screen will **not** appear if the Windows feature is already installed on the computer.



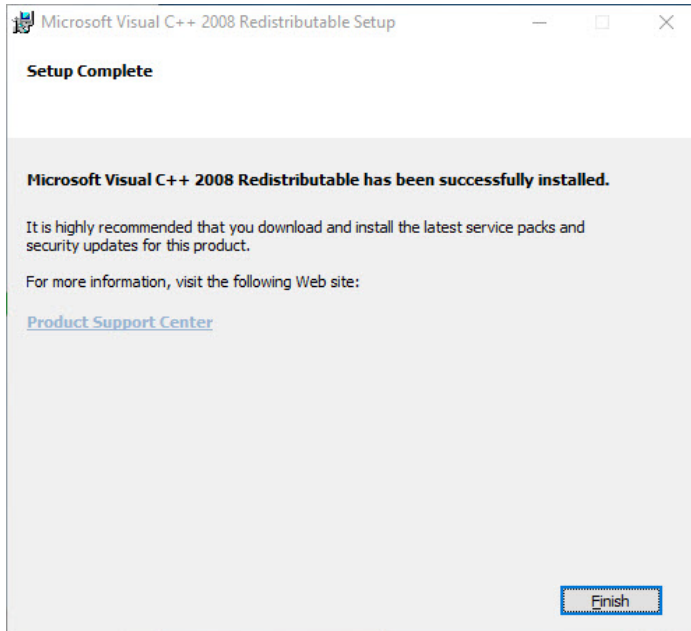
Select the **I have read and accept the license terms** box then select **Install**.

NOTE: This screen will **not** appear if the Windows feature is already installed on the computer.

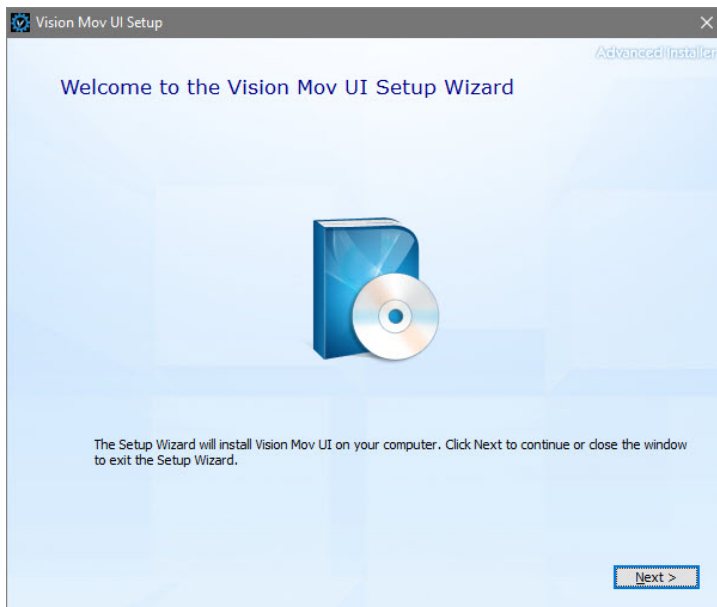


Select **Finish** on the "Setup Complete" screen.

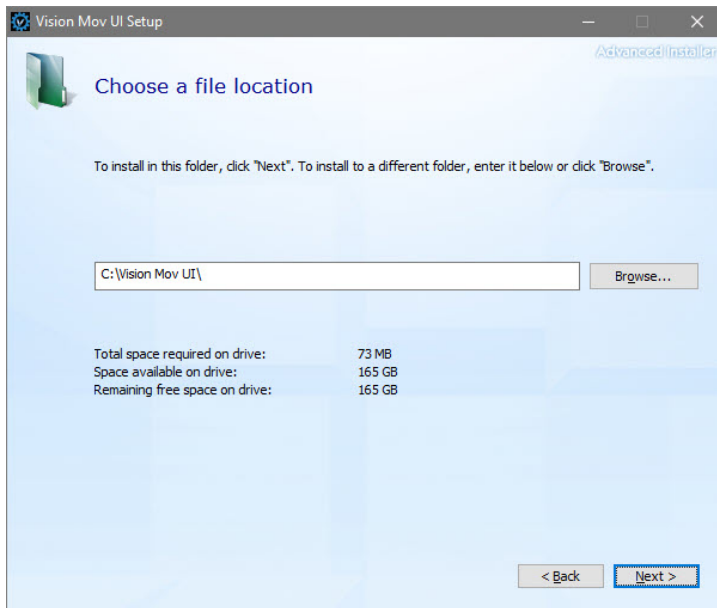
NOTE: This screen will **not** appear if the Windows feature is already installed on the computer.



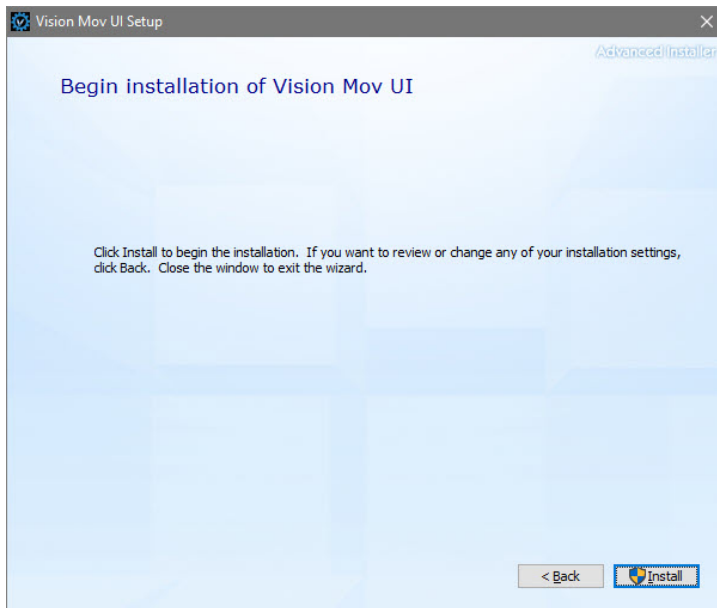
Select **Next** on the "Welcome screen".



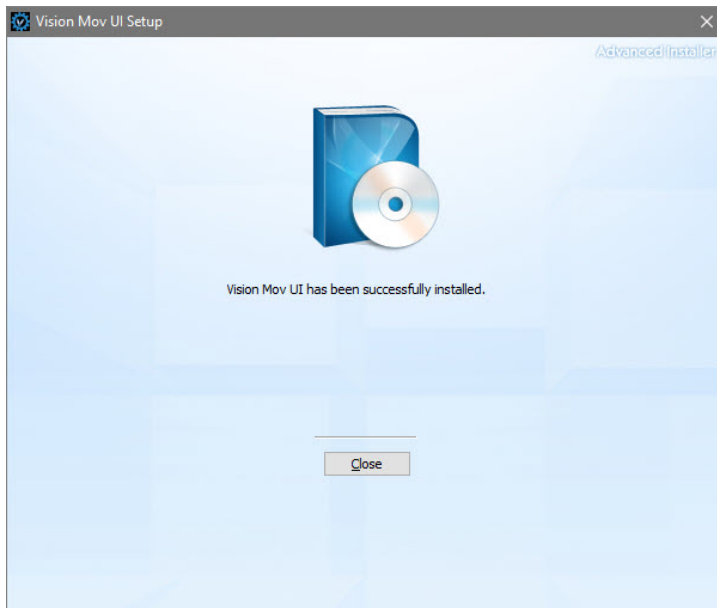
Select **Next** on the "Choose a file location" screen.



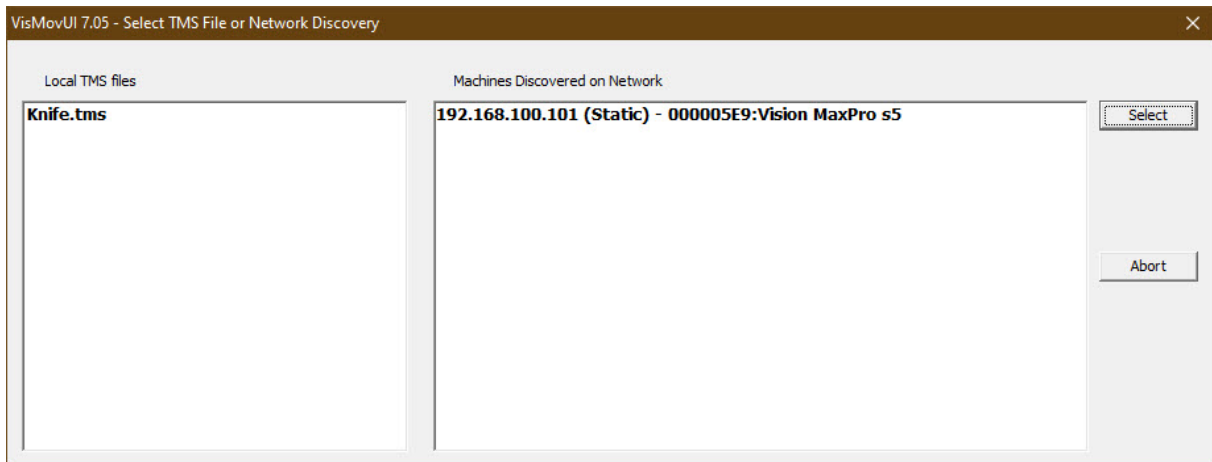
Select **Install** on the "Begin installation" screen.



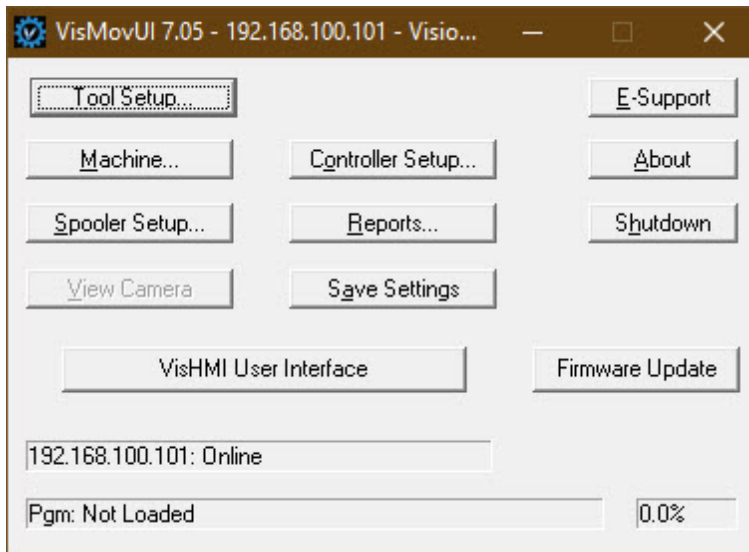
Select **Close** on the "Successful Install" screen.



The VisMovUI screen will appear. Select the Machine in the "Machines Discovered on Network" screen and click **Select**.



The VisMovUI program will appear. Select the **Minimize** button.

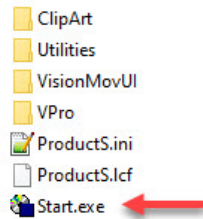


The Vision Move UI program is now installed. Please continue to the network setup section.

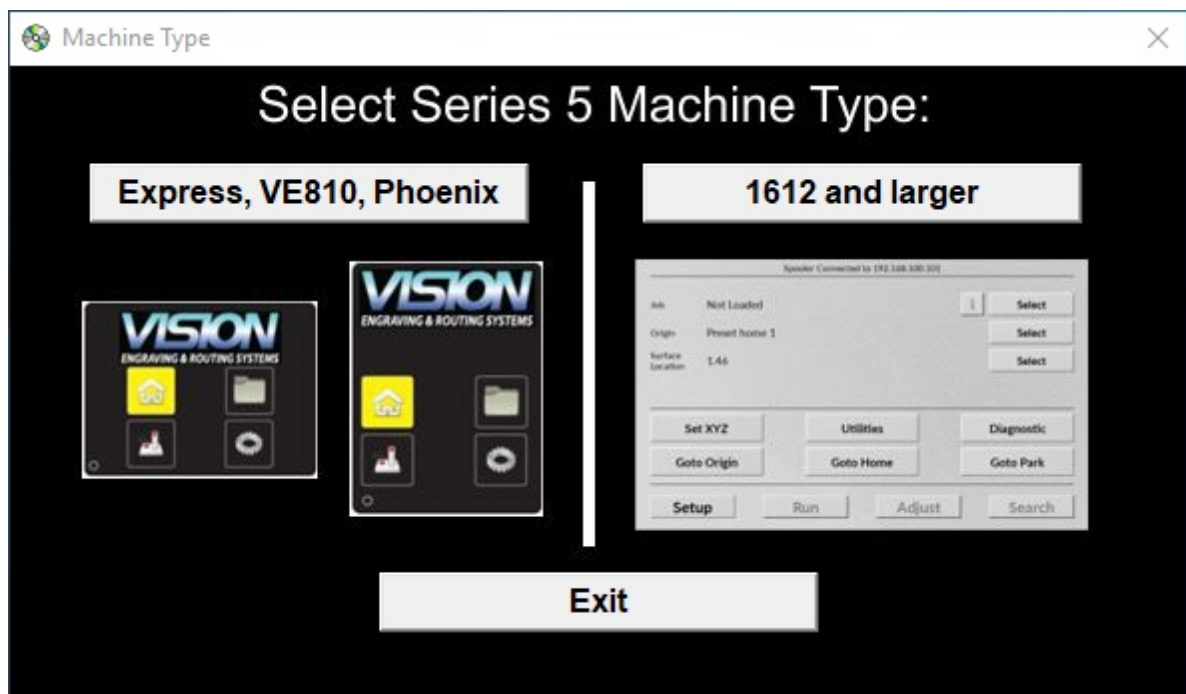
2.6 Vision Software Installation

Insert the Vision USB dongle into the USB port on the computer. Navigate to the USB dongle in Windows File Explorer.

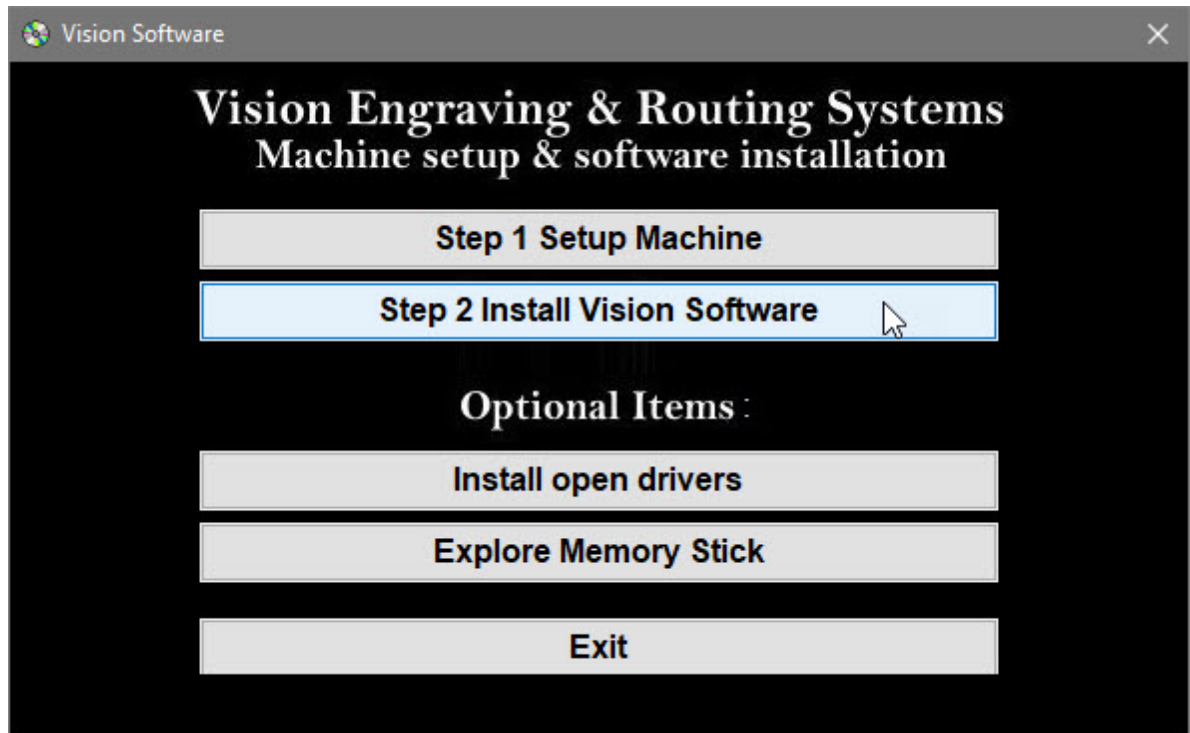
Select the **Start** or **Start.exe** file to begin.



Select **1612 and larger**.



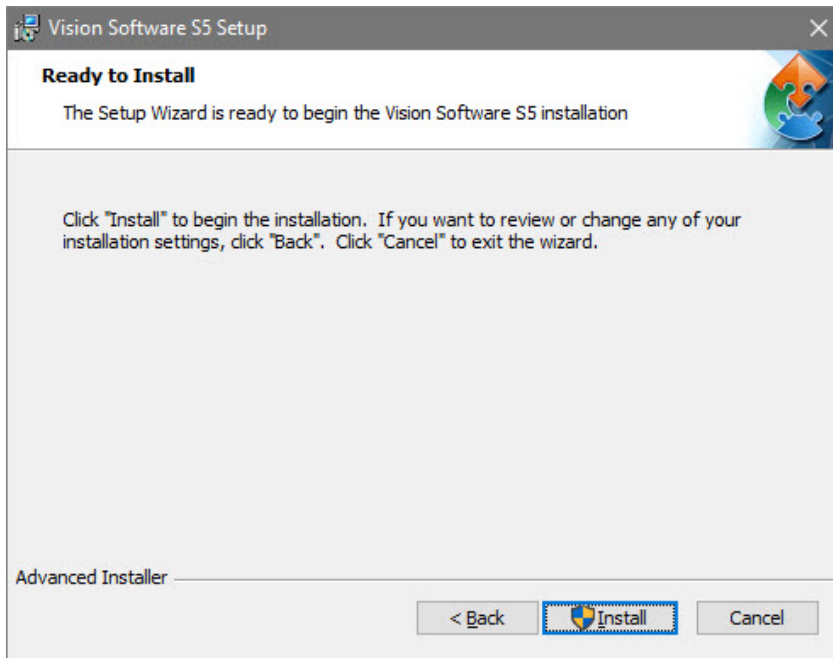
Select **Step 2 Install Vision Software**.



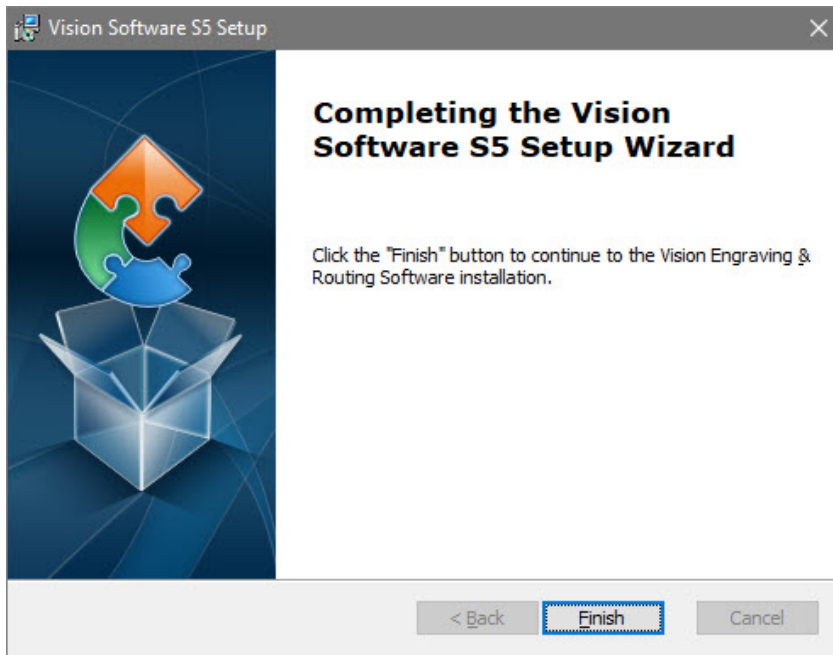
Select **Next** on the "Welcome" screen.



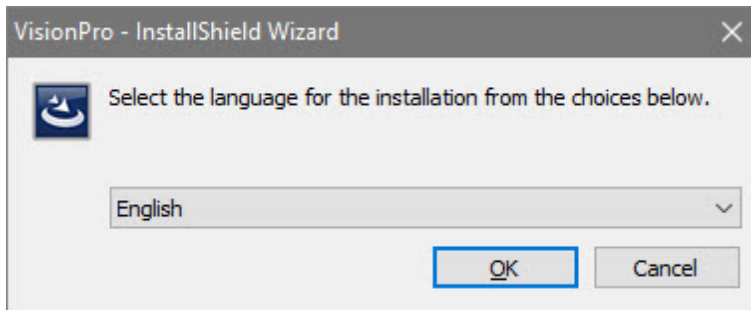
Select **Install** on the "Ready to Install" screen.



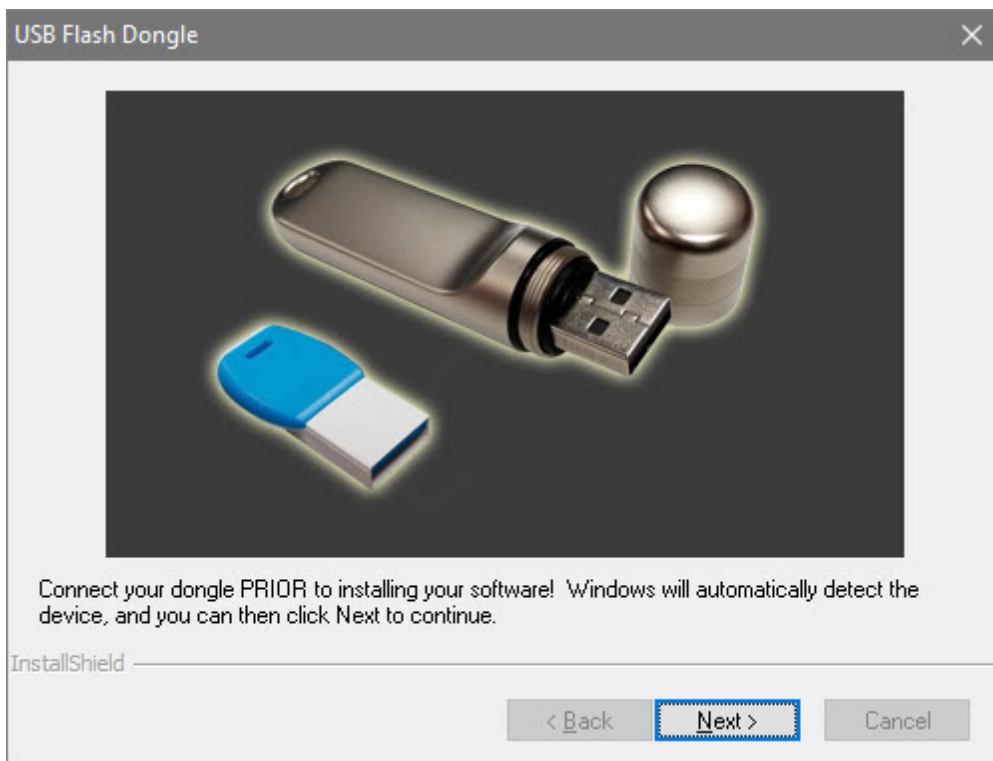
Select **Finish** on the "Complete Install" screen.



Select the language desired and select **OK** on the "Vision Pro install" screen.

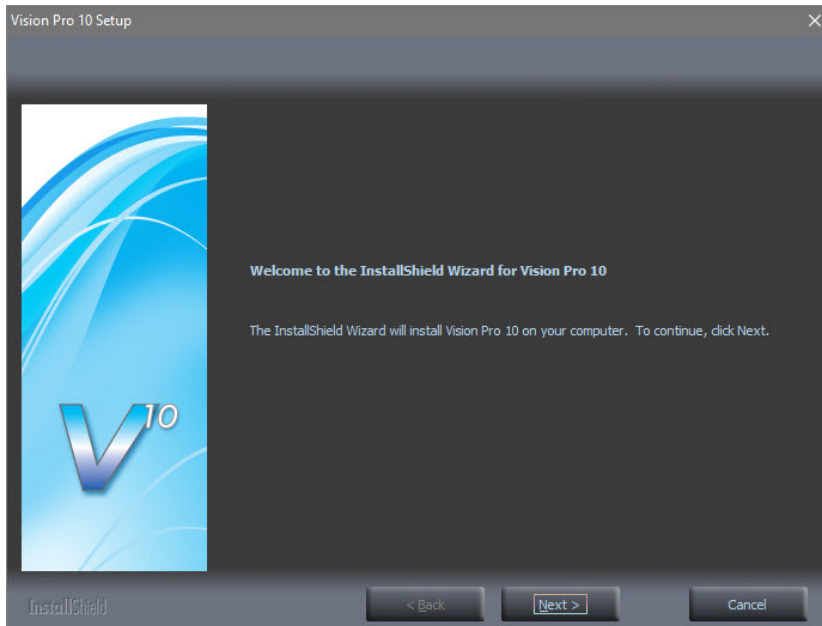


Make sure the USB dongle is installed and select **Next** on the "USB Flash Dongle" screen.

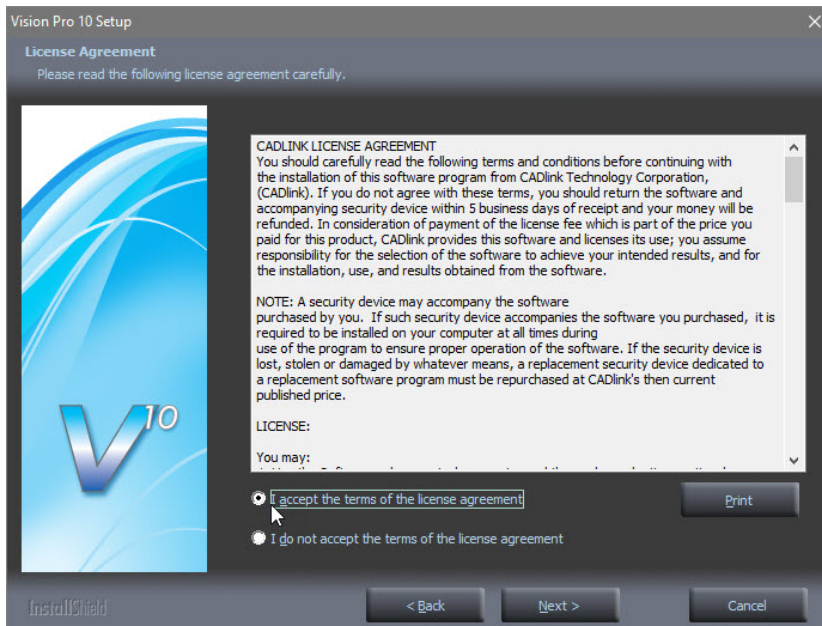


Select **Next** on the "Vision 10 setup" screen.

NOTE: The installation will display "Vision Pro 10 Setup", "Vision Expert 10 Setup" or "Vision Express 10 Setup" depending on which version has been purchased.

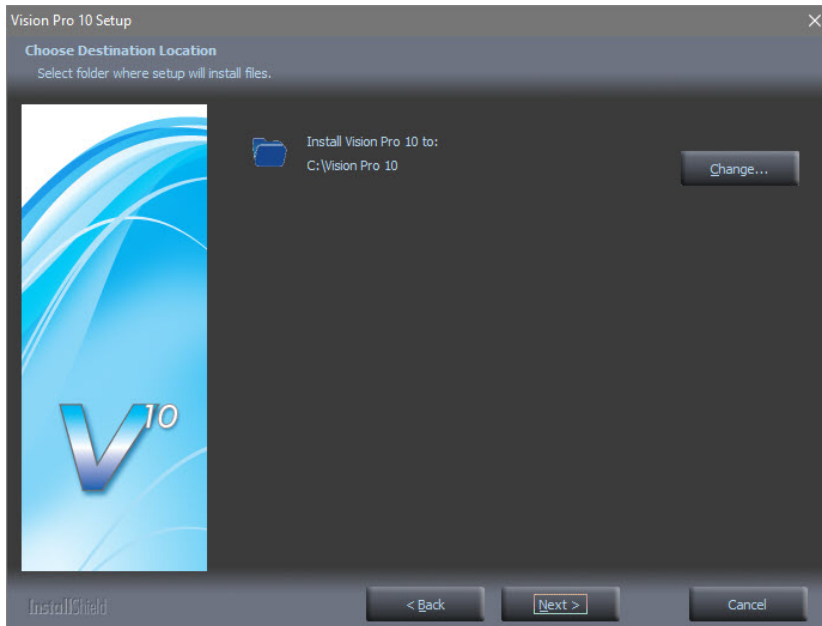


Select the **I accept the terms of the license agreement** box then select **Next** on the "License Agreement" screen.

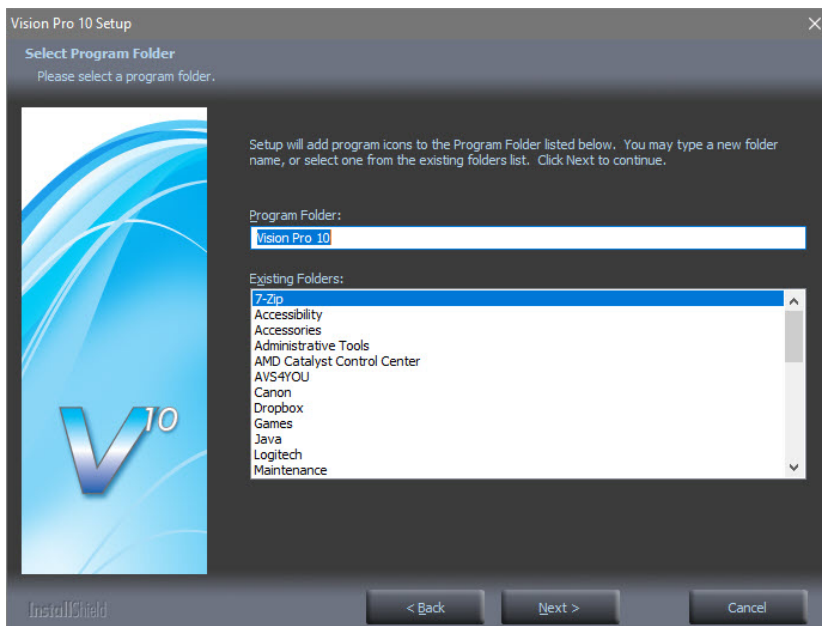


Select **Next** from the "Choose Destination Location" screen.

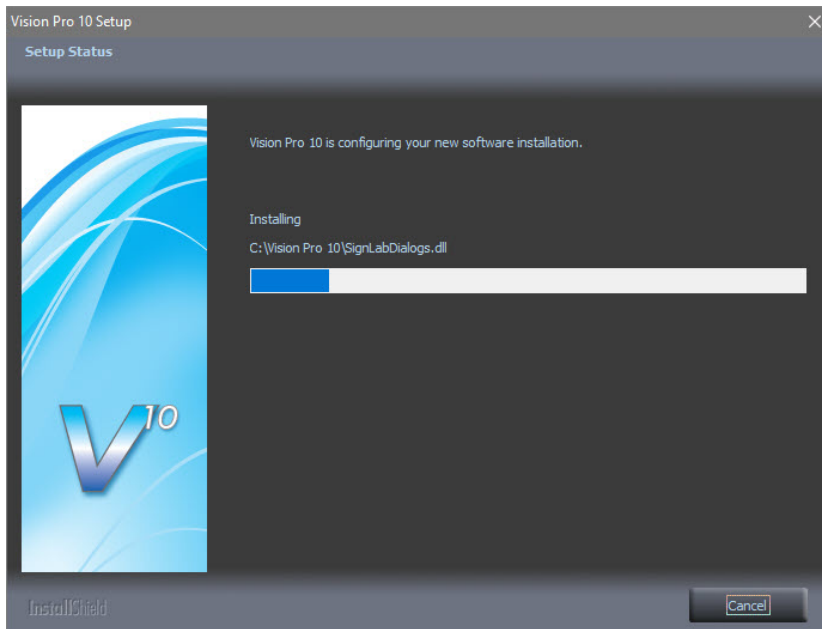
NOTE: The installation folder will be either "C:\Vision Pro 10", "C:\Vision Expert 10" or "C:\Vision Express 10" depending on which version has been purchased.



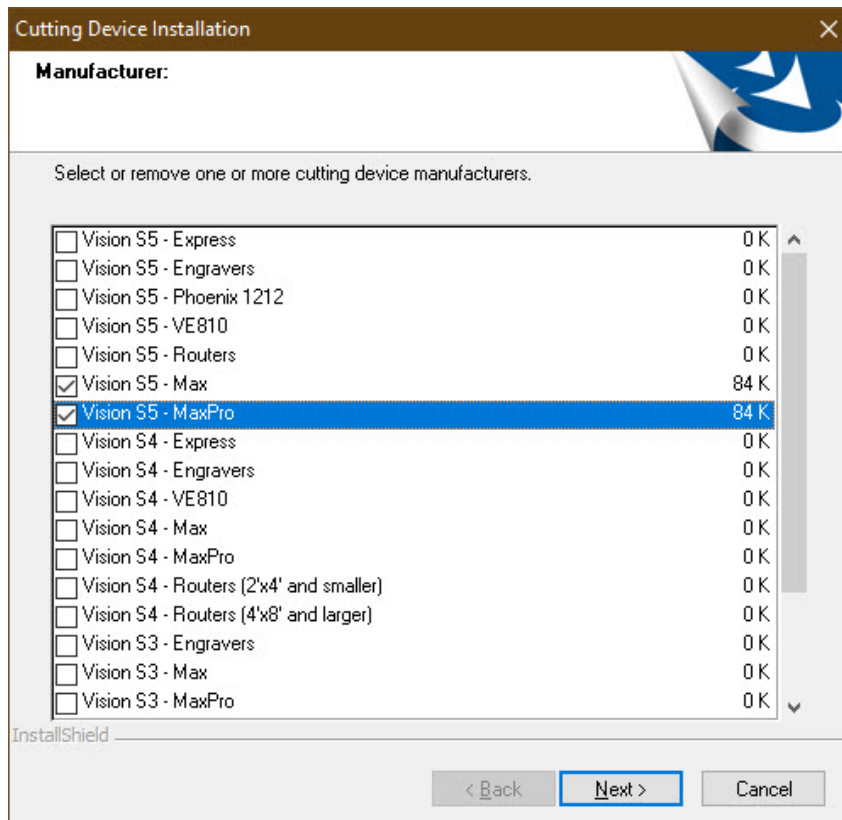
Select **Next** on the "Program Folder" screen.



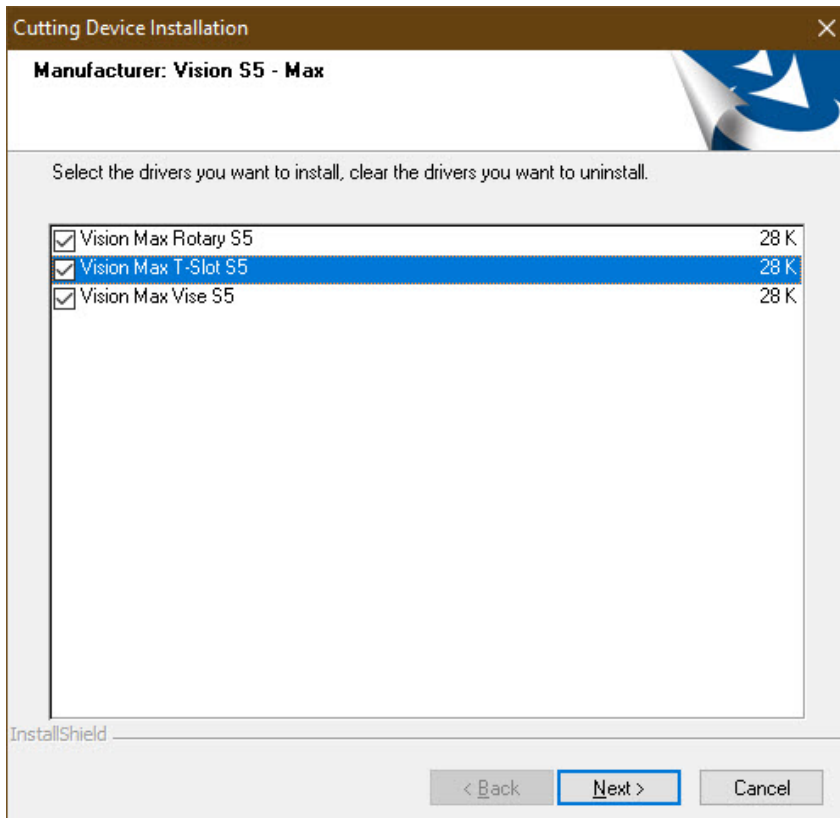
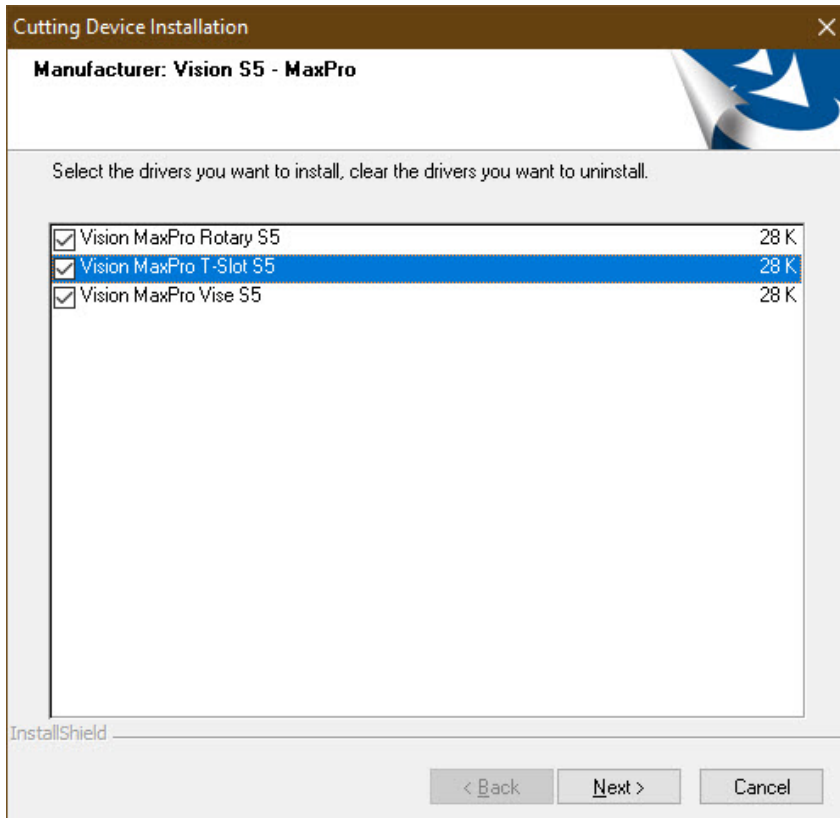
The installation will continue.



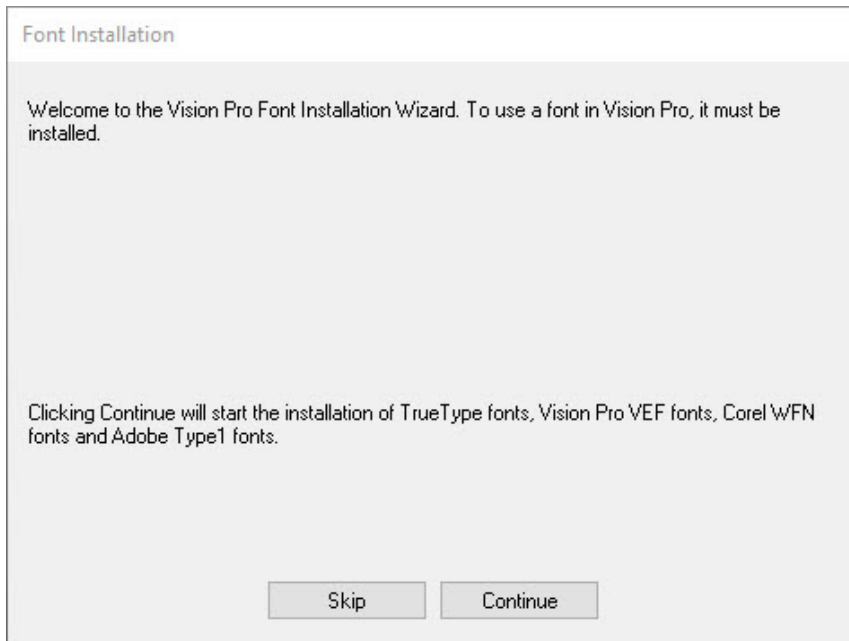
Select **Vision S5 - MaxPro** or **Vision S5 - Max** depending on which machine is being installed and select **Next**.



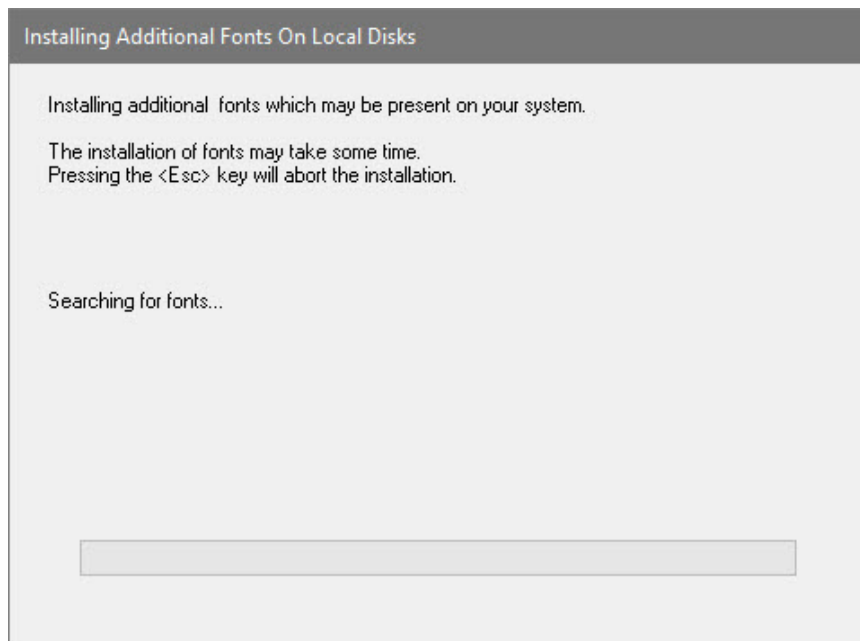
Select the driver for the that matches the machine purchased and select **Next**.



Select **Continue** on the "Font Installation" screen.

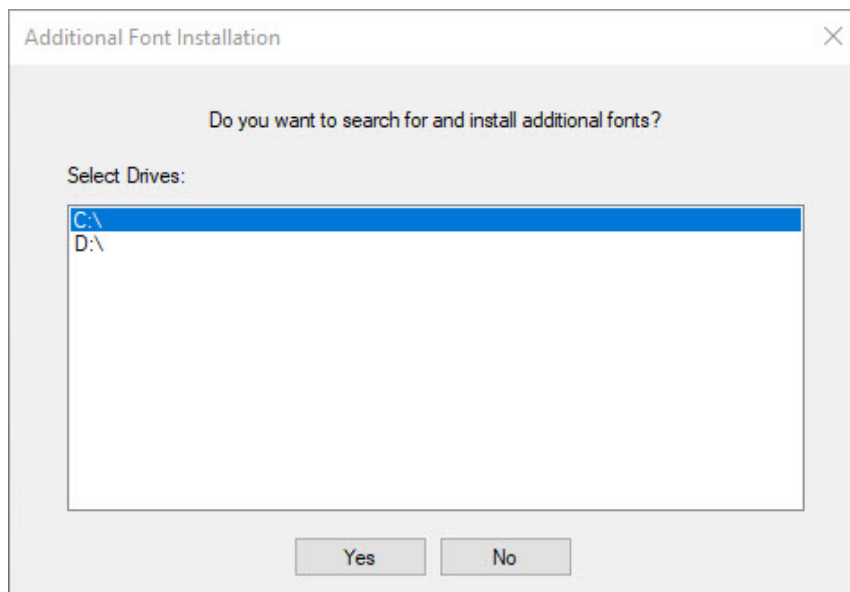


The installation will search for Vision fonts.



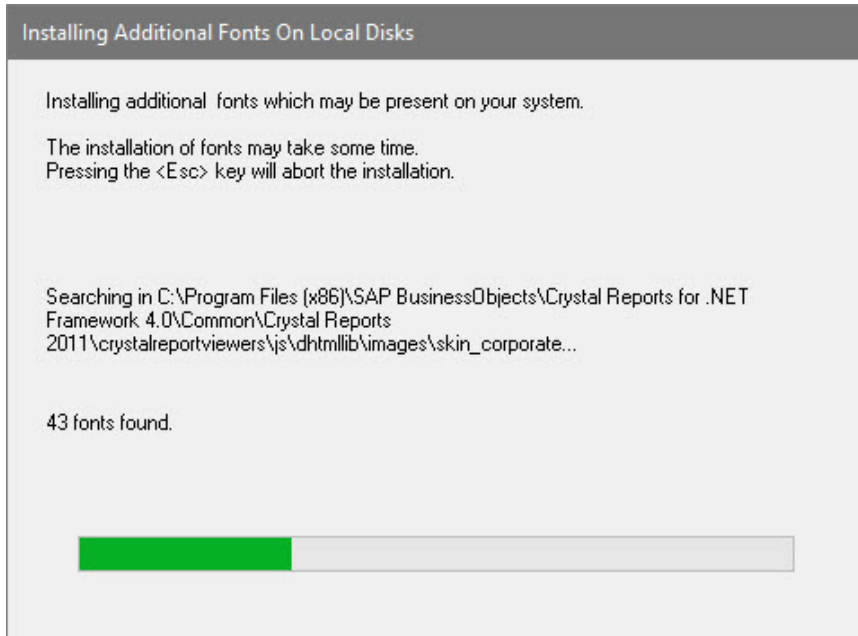
Select the disk drive to search for additional fonts that may be on the computer and select **Yes**.

NOTE: Typically drive C:\ is selected.

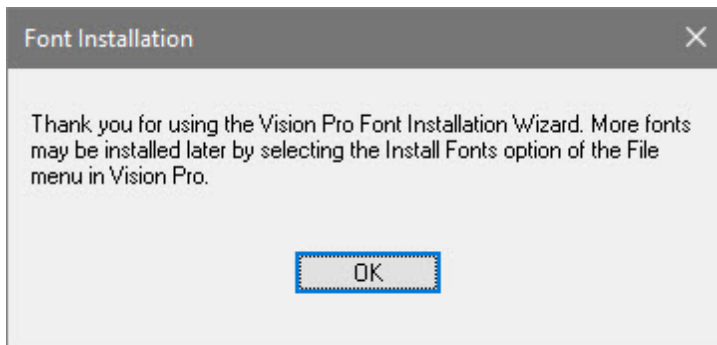


The installation will search for additional fonts.

NOTE: This may take a few minutes.

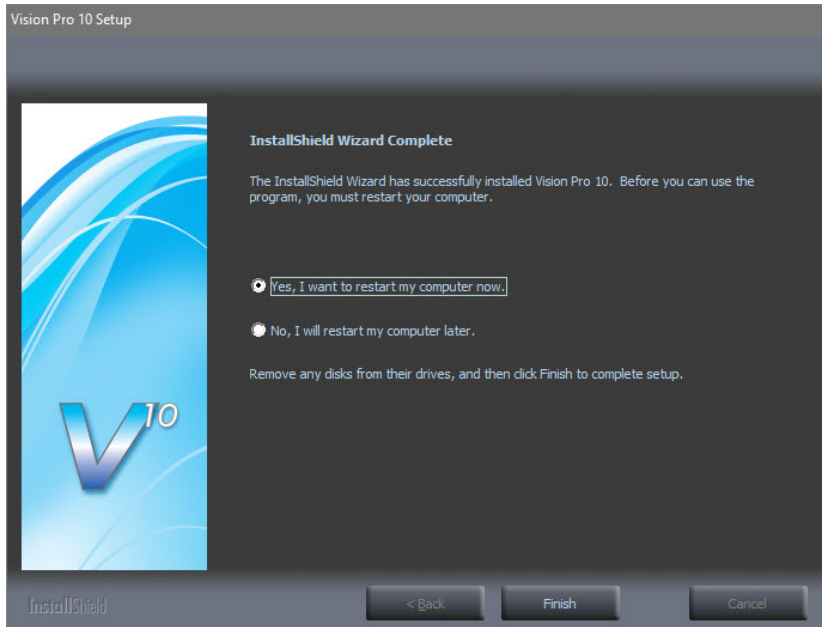


Select **OK** on the "Font Installation Complete" screen.

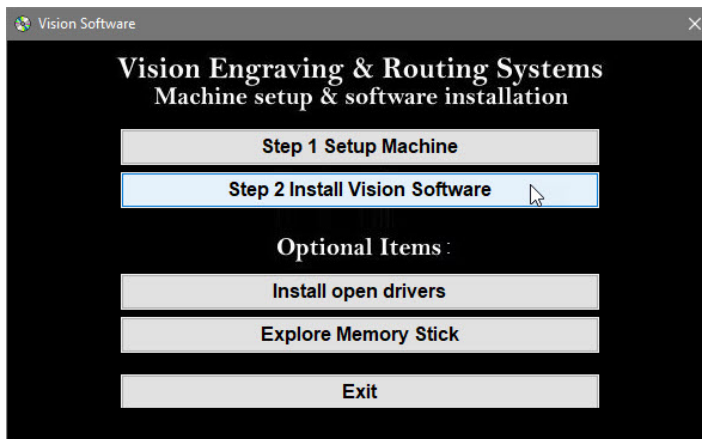


Select **Finish** to complete the installation.

NOTE: The install may or may not ask to restart the computer.



Select **Exit** from the initial screen.



The Vision 10 software and Vision Manuals icon will now be on the Windows desktop.



